

Recombinant Human MCFD2 Protein, His-tagged

Cat. No. MCFD2-13H Lot. No. (See product label)

SPECIFICATION

Product Overview	Recombinant Human MCFD2 protein(Glu27-Gln146), fused with C-terminal His tag, was expressed in E. coli.
Species	Human
Source	E.coli
ProteinLength	Glu27-Gln146
Tag	C-His
Form	Liquid in sterile PBS, pH7.4.
Molecular Mass	The protein has a calculated MW of 15 kDa.
Endotoxin	<1.0EU per 1µg (determined by the LAL method).
Purity	> 90 % as determined by SDS-PAGE.
Storage	Store it under sterile conditions at -20 to -80°C. It is recommended that the protein be aliquoted for optimal storage. Avoid repeated freeze-thaw cycles.
Concentration	1.0 mg/ml. Centrifuge the vial at 4°C before opening to recover the entire contents.
Reconstitution	It is recommended that sterile water be added to the vial to prepare a stock solution of

 Tel: 1-631-559-9269 1-516-512-3133

 Email: info@creative-biomart.com  Fax: 1-631-938-8127

 45-1 Ramsey Road, Shirley, NY 11967, USA

0.2 ug/ul. Centrifuge the vial at 4°C before opening to recover the entire contents.

AA Sequence

MEEPAASFSQP GSMGLDKNTVHDQEHIMEHLEGVINKPEAEMSPQELQLHYFKMH
 DYDGNLLDGLLELSTAITHVHKEEGSEQAPLMSEDELINIIDGVLRDDDKNNDGYIDY
 AEFKSLQAHHHHHHHHHH

GENE INFORMATION

Gene Name

MCFD2 multiple coagulation factor deficiency 2 [Homo sapiens]

Official Symbol

MCFD2

Synonyms

MCFD2; multiple coagulation factor deficiency 2; multiple coagulation factor deficiency protein 2; F5F8D; LMAN1IP; SDNSF; neural stem cell derived neuronal survival protein; neural stem cell-derived neuronal survival protein; F5F8D2; DKFZp686G21263;

Gene ID

90411

mRNA Refseq

NM_001171506

Protein Refseq

NP_001164977

MIM

607788

UniProt ID

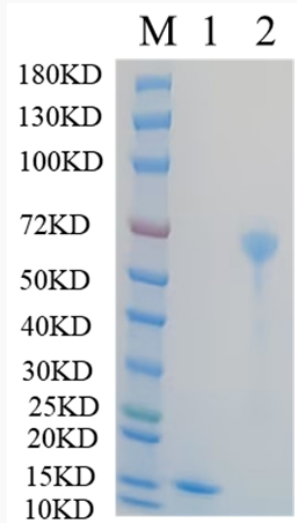
Q8NI22

 Tel: 1-631-559-9269 1-516-512-3133

 Email: info@creative-biomart.com  Fax: 1-631-938-8127

 45-1 Ramsey Road, Shirley, NY 11967, USA

SDS-PAGE



Lane 1: MCFD2-13H; Lane 2: BSA

 Tel: 1-631-559-9269 1-516-512-3133

 Email: info@creative-biomart.com  Fax: 1-631-938-8127

 45-1 Ramsey Road, Shirley, NY 11967, USA