

Recombinant Full Length Human MCL1 Protein, C-Flag-tagged

Cat. No. MCL1-337HFL Lot. No. (See product label)

SPECIFICATION

Product Overview Recombinant Full Length Human MCL1 Protein, fused to Flag-tag at C-terminus, was expressed in Mammalian cells.

Species Human

Source Mammalian Cells

Description This gene encodes an anti-apoptotic protein, which is a member of the Bcl-2 family. Alternative splicing results in multiple transcript variants. The longest gene product (isoform 1) enhances cell survival by inhibiting apoptosis while the alternatively spliced shorter gene products (isoform 2 and isoform 3) promote apoptosis and are death-inducing.

Form 25 mM Tris HCl, pH 7.3, 100 mM glycine, 10% glycerol.

Molecular Mass 37.2 kDa

AA Sequence

```
MFGLKRNAVIGLNLNYCGGAGLGAGSGGATRPGGRLLATEKEASARREIGGGGEAGAV
IGGSAGASPPSTLT PDSRRVARPPPIGAEVPDVTATPARLLFFAPTRRAAPLEEMEA
PAADAIMSPEEELDGYEPEPLGKRPAV LPLELVGESGNNTSTDGSLPSTPPPAEEE
EDEL YRQSLEIISRYLREQATGAKDTKPMGRSGATSRKAL ETLRRVGDGVQRNHET
AFQGMLRKLDIKNEDDVKSLSRVMIHVFSDGVTNWGRIVTLISFGAFVAKHLKT INQE
SCIEPLAESITDVLVRTKRDWLVKQRGWDGFVEFFHVEDLEGGIRNVLLAFAGVAGV
GAGLAYLIRTRTRPLEQKLISEEDLAANDILDYKDDDDKV
```

 Tel: 1-631-559-9269 1-516-512-3133

 Email: info@creative-biomart.com  Fax: 1-631-938-8127

 45-1 Ramsey Road, Shirley, NY 11967, USA

Purity	> 80% as determined by SDS-PAGE and Coomassie blue staining.
Stability	Stable for 12 months from the date of receipt of the product under proper storage and handling conditions. Avoid repeated freeze-thaw cycles.
Storage	Store at -80 centigrade.
Concentration	>50 ug/mL as determined by microplate BCA method.
Preparation	Recombinant protein was captured through anti-DDK affinity column followed by conventional chromatography steps.
Protein Families	Druggable Genome, Transmembrane
Full Length	Full L.

GENE INFORMATION

Gene Name	MCL1 MCL1 apoptosis regulator, BCL2 family member [Homo sapiens (human)]
Official Symbol	MCL1
Synonyms	TM; EAT; MCL1L; MCL1S; Mcl-1; BCL2L3; MCL1-ES; bcl2-L-3; mcl1/EAT
Gene ID	4170
mRNA Refseq	NM_021960.5
Protein Refseq	NP_068779.1
MIM	159552

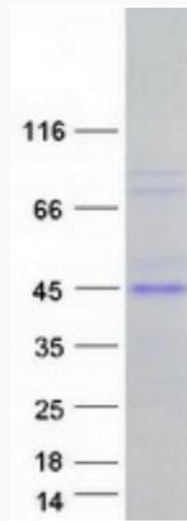
 Tel: 1-631-559-9269 1-516-512-3133

 Email: info@creative-biomart.com  Fax: 1-631-938-8127

 45-1 Ramsey Road, Shirley, NY 11967, USA

UniProt ID

Q07820



Coomassie blue staining of purified MCL1 protein.

 Tel: 1-631-559-9269 1-516-512-3133

 Email: info@creative-biomart.com  Fax: 1-631-938-8127

 45-1 Ramsey Road, Shirley, NY 11967, USA