

# Recombinant Human MCL1 Protein, Myc/DDK-tagged, C13 and N15-labeled

**Cat. No.** MCL1-5820H    **Lot. No.** (See product label)

## SPECIFICATION

<b>Product Overview</b>	MCL1 MS Standard C13 and N15-labeled recombinant protein (NP_068779) with a C-terminal MYC/DDK tag, was expressed in HEK293 cells.
<b>Species</b>	Human
<b>Source</b>	HEK293
<b>Description</b>	This gene encodes an anti-apoptotic protein, which is a member of the Bcl-2 family. Alternative splicing results in multiple transcript variants. The longest gene product (isoform 1) enhances cell survival by inhibiting apoptosis while the alternatively spliced shorter gene products (isoform 2 and isoform 3) promote apoptosis and are death-inducing.
<b>Molecular Mass</b>	37.2 kDa
<b>AA Sequence</b>	MFGLKRNAVIGLNLVYCGGAGLGAGSGGATRPGGRLLATEKEASARREIGGGGEAGAV IGGSAGASPPSTLTPDSRRVARPPPIGAEPDVTATPARLLFFAPTRRAAPLEEMEA PAADAIMSPEEELDGYEPEPLGKRPAVLPLLELVGESGNNSTDGSLPSTPPPAEEE EDELRYQSLEIISRYLREQATGAKDTKPMGRSGATSRKALETLRRVGDGVQRNHET AFQGMLRKLDIKNEDDVKSLSRVMIHVFSDBGVTNWGRIVTLISFGAFVAKHLKTINQE SCIEPLAESITDVLVRTKRDWLVKQRGWDGFVEFFHVEDLEGGIRNVLLAFAGVAGV GAGLAYLIRTRTRPLEQKLISEEDLAANDILDYKDDDDKV
<b>Purity</b>	> 80% as determined by SDS-PAGE and Coomassie blue staining

 Tel: 1-631-559-9269    1-516-512-3133

 Email: [info@creative-biomart.com](mailto:info@creative-biomart.com)     Fax: 1-631-938-8127

 45-1 Ramsey Road, Shirley, NY 11967, USA

<b>Stability</b>	Stable for 3 months from receipt of products under proper storage and handling conditions.
<b>Storage</b>	Store at -80 centigrade. Avoid repeated freeze-thaw cycles.
<b>Concentration</b>	50 µg/mL as determined by BCA
<b>Storage Buffer</b>	100 mM glycine, 25 mM Tris-HCl, pH 7.3.

## GENE INFORMATION

<b>Gene Name</b>	MCL1 MCL1 apoptosis regulator, BCL2 family member [ Homo sapiens (human) ]
<b>Official Symbol</b>	MCL1
<b>Synonyms</b>	MCL1; myeloid cell leukemia sequence 1 (BCL2-related); induced myeloid leukemia cell differentiation protein Mcl-1; BCL2L3; Mcl 1; bcl-2-like protein 3; myeloid cell leukemia ES; bcl-2-related protein EAT/mcl1; TM; EAT; MCL1L; MCL1S; Mcl-1; MCL1-ES; bcl2-L-3; mcl1/EAT; MGC1839; MGC104264;
<b>Gene ID</b>	4170
<b>mRNA Refseq</b>	NM_021960
<b>Protein Refseq</b>	NP_068779
<b>MIM</b>	159552
<b>UniProt ID</b>	Q07820

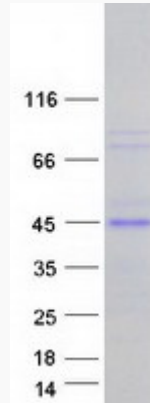
 Tel: 1-631-559-9269 1-516-512-3133

 Email: [info@creative-biomart.com](mailto:info@creative-biomart.com)  Fax: 1-631-938-8127

 45-1 Ramsey Road, Shirley, NY 11967, USA



SDS-PAGE



Tel: 1-631-559-9269 1-516-512-3133

Email: [info@creative-biomart.com](mailto:info@creative-biomart.com) Fax: 1-631-938-8127

45-1 Ramsey Road, Shirley, NY 11967, USA