

Recombinant Rhesus monkey MCL1 Protein, His-tagged

Cat. No. MCL1-73R Lot. No. (See product label)

SPECIFICATION

Product Overview	Recombinant Rhesus monkey MCL1 Protein, fused to His-tag, was expressed in E. coli.
Species	Rhesus macaque
Source	E.coli
Description	This gene encodes an anti-apoptotic protein, which is a member of the Bcl-2 family. Alternative splicing results in multiple transcript variants. The longest gene product (isoform 1) enhances cell survival by inhibiting apoptosis while the alternatively spliced shorter gene products (isoform 2 and isoform 3) promote apoptosis and are death-inducing.
Form	50mM Tris, 300mM NaCl, pH 8.0.
Molecular Mass	39.3 kDa
AA Sequence	<p>MGSSHHHHHSSGLVPRGSHMFGLKRNAVIGLNLYCGGAGLGAGSGGATPPGGR LLATEKEASARREIGGGEAGTVIGGSAGASPPAALTPDARRVARPPPIGAEVPDVT SPARLLFFAPTRRASPLEEMEAPAADAIMSPEEELDGYEPEPLGKRPAVLPLLELVG ESGNSPSTDGSLPSTPPPAEEEEDELRYQSLEIISRYLREQATGAKDTKPMGRSGAT SRKALETLRRVGDGVQRNHETAFQGMLRKLDIKNEDDVKLSLRVMVHVFSGDVTN WGRIVTLISFGAFVAKHLKTINQESCIEPLAESITDVLVVRTKRDWLVKQRGWDGFVEF FHVEDLEGGIRNVLLAFAGVAGVGAGLAYLIR</p>

 Tel: 1-631-559-9269 1-516-512-3133

 Email: info@creative-biomart.com  Fax: 1-631-938-8127

 45-1 Ramsey Road, Shirley, NY 11967, USA

Purity	>90%
Storage	Store it under sterile conditions at -20 to -80 centigrade. It is recommended that the protein be aliquoted for optimal storage. Avoid repeated freeze-thaw cycles.
Concentration	0.1 mg/ml

GENE INFORMATION

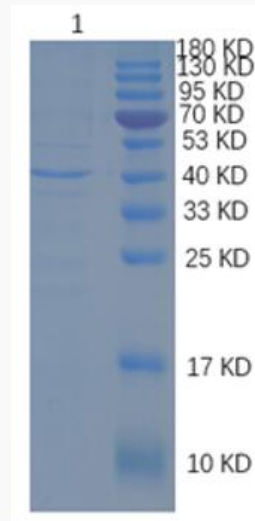
Gene Name	MCL1 MCL1 apoptosis regulator, BCL2 family member [<i>Macaca mulatta</i> (Rhesus monkey)]
Official Symbol	MCL1
Synonyms	TM; EAT; MCL1L; MCL1S; Mcl-1; BCL2L3; MCL1-ES; bcl2-L-3; mcl1/EAT
Gene ID	707539
mRNA Refseq	NM_001266501
Protein Refseq	NP_001253430
UniProt ID	F7HUE9

 Tel: 1-631-559-9269 1-516-512-3133

 Email: info@creative-biomart.com  Fax: 1-631-938-8127

 45-1 Ramsey Road, Shirley, NY 11967, USA

SDS-PAGE



Reducing 12% SDS-PAGE analysis profile of purified MCL1 (CBB stained).

 Tel: 1-631-559-9269 1-516-512-3133

 Email: info@creative-biomart.com  Fax: 1-631-938-8127

 45-1 Ramsey Road, Shirley, NY 11967, USA