

## Recombinant Human MCM2 Protein (Phe657-Phe904), N-His tagged

Cat. No. MCM2-4518H    Lot. No. (See product label)

### SPECIFICATION

<b>Product Overview</b>	Recombinant human MCM2 (Phe657-Phe904) fused with the N-His tag was expressed in E. coli.
<b>Species</b>	Human
<b>Source</b>	E.coli
<b>ProteinLength</b>	Phe657-Phe904
<b>Form</b>	Lyophilized powder/frozen liquid
<b>Molecular Mass</b>	31.33 kDa
<b>Purity</b>	>90% as determined by SDS-PAGE.
<b>Notes</b>	For research use only.
<b>Storage</b>	Use a manual defrost freezer and avoid repeated freeze thaw cycles. Store at 2 to 8 centigrade for one week. Store at -20 to -80 centigrade for twelve months from the date of receipt.
<b>Storage Buffer</b>	0.01M PBS, pH 7.4, 0.02% NLS
<b>Reconstitution</b>	Reconstitute in sterile water for a stock solution.

 Tel: 1-631-559-9269    1-516-512-3133

 Email: [info@creative-biomart.com](mailto:info@creative-biomart.com)     Fax: 1-631-938-8127

 45-1 Ramsey Road, Shirley, NY 11967, USA

**Shipping** They are shipped out with dry ice/blue ice unless customers require otherwise.

## GENE INFORMATION

**Gene Name** [MCM2 minichromosome maintenance complex component 2 \[ Homo sapiens \(human\) \]](#)

**Official Symbol** [MCM2](#)

**Synonyms** MCM2; minichromosome maintenance complex component 2; CCNL1, CDCL1, MCM2 minichromosome maintenance deficient 2, mitotin (*S. cerevisiae*), minichromosome maintenance deficient (*S. cerevisiae*) 2 (mitotin); DNA replication licensing factor MCM2; BM28; cdc19; D3S3194; KIAA0030; mitotin; cyclin-like 1; nuclear protein BM28; cell division cycle-like 1; minichromosome maintenance protein 2 homolog; minichromosome maintenance deficient 2 (mitotin); MCM2 minichromosome maintenance deficient 2, mitotin; CCNL1; CDCL1; MITOTIN; MGC10606;

**Gene ID** [4171](#)

**mRNA Refseq** [NM\\_004526](#)

**Protein Refseq** [NP\\_004517](#)

**MIM** [116945](#)

**UniProt ID** [P49736](#)

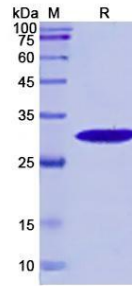
 Tel: 1-631-559-9269 1-516-512-3133

 Email: [info@creative-biomart.com](mailto:info@creative-biomart.com)  Fax: 1-631-938-8127

 45-1 Ramsey Road, Shirley, NY 11967, USA



SDS-PAGE



Tel: 1-631-559-9269 1-516-512-3133

Email: [info@creative-biomart.com](mailto:info@creative-biomart.com) Fax: 1-631-938-8127

45-1 Ramsey Road, Shirley, NY 11967, USA