

Recombinant Human MCM7 Protein, Myc/DDK-tagged, C13 and N15-labeled

Cat. No. MCM7-2805H **Lot. No.** (See product label)

SPECIFICATION

Product Overview	MCM7 MS Standard C13 and N15-labeled recombinant protein (NP_005907) with a C-terminal MYC/DDK tag, was expressed in HEK293 cells.
Species	Human
Source	HEK293
Description	The protein encoded by this gene is one of the highly conserved mini-chromosome maintenance proteins (MCM) that are essential for the initiation of eukaryotic genome replication. The hexameric protein complex formed by the MCM proteins is a key component of the pre-replication complex (pre_RC) and may be involved in the formation of replication forks and in the recruitment of other DNA replication related proteins. The MCM complex consisting of this protein and MCM2, 4 and 6 proteins possesses DNA helicase activity, and may act as a DNA unwinding enzyme. Cyclin D1-dependent kinase, CDK4, is found to associate with this protein, and may regulate the binding of this protein with the tumorsuppressor protein RB1/RB. Alternatively spliced transcript variants encoding distinct isoforms have been reported.
Molecular Mass	81.1 kDa
AA Sequence	MALKDYALEKEKVKKFLQEFYQDDELGKKQFKYGNQLVRLAHREQVALYVDLDDVA EDDPELVDSICENARRYAKLFADAVQELLPQYKEREVVNKDVLDDVYIEHRLMMEQRS RDPGMVRSPQNQYPAELMRRFELYFQGPSSNKPRVIREVRADSVGKLVTVRGIVTR

 Tel: 1-631-559-9269 1-516-512-3133

 Email: info@creative-biomart.com  Fax: 1-631-938-8127

 45-1 Ramsey Road, Shirley, NY 11967, USA

VSEVKPKMVVATYTCDCQCGAETYQPIQSPTFMPLIMCPSQECQTNRSGGRLYLQTR
 GSRFIKFQEMKMQEHSDQVPVGNIPRSITVLVEGENTRIAQPGDHVSVTGIFLPILRT
 GFRQVVQGLLSETYLEAHRIVKMNKSEDDGAGELTREELRQIAEEDFYEKLAASI
 APEIYGHEDVKKALLLLLGGVDQSPRGMKIRGNINICLMGDPGVAKSQLLSYIDRLA
 PRSQYTTGRGSSGVLTAAVLRDSVSGELTLEGGALVLADQGVCCIDEFDKMAEAD
 RTAIHEVMEQQTISIAKAGILTTLNARCSILAAANPAYGRYNPRRSLEQNIQLPAALLS
 RFDLLWLIQDRPDRDNDLRLAQHITYVHQHSRQPPSQFEPLDMKLMRRYIAMCREK
 QPMVPESLADYITAAYVEMRREAWASKDATYTSARTLLAILRLSTALARLRMVDVVE
 KEDVNEAIRLMEMSKDSSLGDKGQTARTQRPADVIFATVRELVSGGRSVRFSEAEQ
 RCVSRGFTPAQFQAALDEYEELNVWQVNASRTRITFVTRTRPLEQKLISEEDLAAND
 ILDYKDDDDKV

Purity > 80% as determined by SDS-PAGE and Coomassie blue staining

Stability Stable for 3 months from receipt of products under proper storage and handling conditions.

Storage Store at -80 centigrade. Avoid repeated freeze-thaw cycles.

Concentration 50 µg/mL as determined by BCA

Storage Buffer 100 mM glycine, 25 mM Tris-HCl, pH 7.3.

GENE INFORMATION

Gene Name MCM7 minichromosome maintenance complex component 7 [Homo sapiens (human)]

Official Symbol MCM7

Synonyms MCM7; minichromosome maintenance complex component 7; MCM2, MCM7

 Tel: 1-631-559-9269 1-516-512-3133

 Email: info@creative-biomart.com  Fax: 1-631-938-8127

 45-1 Ramsey Road, Shirley, NY 11967, USA

minichromosome maintenance deficient 7 (*S. cerevisiae*), minichromosome maintenance deficient (*S. cerevisiae*) 7; DNA replication licensing factor MCM7; CDC47; CDC47 homolog; homolog of *S. cerevisiae* Cdc47; minichromosome maintenance deficient 7; MCM2; P85MCM; P1CDC47; PNAS146; P1.1-MCM3;

Gene ID [4176](#)

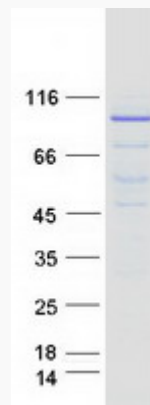
mRNA Refseq [NM_005916](#)

Protein Refseq [NP_005907](#)

MIM [600592](#)

UniProt ID [P33993](#)

SDS-PAGE



 Tel: 1-631-559-9269 1-516-512-3133

 Email: info@creative-biomart.com  Fax: 1-631-938-8127

 45-1 Ramsey Road, Shirley, NY 11967, USA