

Recombinant Human MCM7 Protein, GST-tagged

Cat. No. MCM7-4517H Lot. No. (See product label)

SPECIFICATION

Product Overview	Human MCM7 full-length ORF (AAH09398, 1 a.a. - 389 a.a.) recombinant protein with GST-tag at N-terminal.
Species	Human
Source	Wheat Germ
Description	The protein encoded by this gene is one of the highly conserved mini-chromosome maintenance proteins (MCM) that are essential for the initiation of eukaryotic genome replication. The hexameric protein complex formed by the MCM proteins is a key component of the pre-replication complex (pre_RC) and may be involved in the formation of replication forks and in the recruitment of other DNA replication related proteins. The MCM complex consisting of this protein and MCM2, 4 and 6 proteins possesses DNA helicase activity, and may act as a DNA unwinding enzyme. Cyclin D1-dependent kinase, CDK4, is found to associate with this protein, and may regulate the binding of this protein with the tumorsuppressor protein RB1/RB. Alternatively spliced transcript variants encoding distinct isoforms have been reported. [provided by RefSeq]
Molecular Mass	68.53 kDa
AA Sequence	MALKDYALEKEKVKKFLQEFYQDDELGKKQFKYGNQLVRLAHREQVALYVDLDDVA EDDPELVDSICENARRYAKLFADAVQELLPQYKEREVVNKDVLDDVYIEHRLMMEQRS RDPGMVRSPQNQYPAELMRRFELYFQGPSSSKPRVIREVRADSVGKLVTVRGIVTR

 Tel: 1-631-559-9269 1-516-512-3133

 Email: info@creative-biomart.com  Fax: 1-631-938-8127

 45-1 Ramsey Road, Shirley, NY 11967, USA

VSEVKPKMVVATYTCDCQCGAETYQPIQSPTFMPLIMCPSQECQTNRSGGRLYLQTR
 GSRFIKFQEMKMQEHSDQVPVGNIPRSITVLVEGENTRIAQPGDHVSVTGIFLPILRT
 GFRQVVQGLLSETYLEAHRIVKMNKSEDDDESAGELTREELRQIADVIFATVRELVS
 GGRSVRFSEAEQRCVSRGFTPAQFQAALDEYEELNVWQVNASRTRITFV

Applications	Enzyme-linked Immunoabsorbent Assay Western Blot (Recombinant protein) Antibody Production Protein Array
Notes	Best use within three months from the date of receipt of this protein.
Storage	Store at -80 centigrade. Aliquot to avoid repeated freezing and thawing.
Storage Buffer	50 mM Tris-HCl, 10 mM reduced Glutathione, pH=8.0 in the elution buffer.

GENE INFORMATION

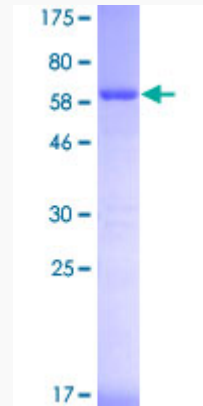
Gene Name	MCM7 minichromosome maintenance complex component 7 [Homo sapiens]
Official Symbol	MCM7
Synonyms	MCM7; minichromosome maintenance complex component 7; MCM2, MCM7 minichromosome maintenance deficient 7 (<i>S. cerevisiae</i>) , minichromosome maintenance deficient (<i>S. cerevisiae</i>) 7; DNA replication licensing factor MCM7; CDC47; CDC47 homolog; homolog of <i>S. cerevisiae</i> Cdc47; minichromosome maintenance deficient 7; MCM2; P85MCM; P1CDC47; PNAS146; P1.1-MCM3;
Gene ID	4176
mRNA Refseq	NM_005916

Protein Refseq NP_005907

MIM 600592

UniProt ID P33993

Quality Control
Testing



12.5% SDS-PAGE Stained with Coomassie Blue

Tel: 1-631-559-9269 1-516-512-3133

Email: info@creative-biomart.com Fax: 1-631-938-8127

45-1 Ramsey Road, Shirley, NY 11967, USA