

Recombinant Human MCMDC2 Protein, GST-Tagged

Cat. No. MCMDC2-0165H **Lot. No.** (See product label)

SPECIFICATION

Product Overview	Human C8orf45 full-length ORF (NP_775789.2, 1 a.a. - 585 a.a.) recombinant protein with GST-tag at N-terminal.
Species	Human
Source	Wheat Germ
Description	MCMDC2 (Minichromosome Maintenance Domain Containing 2) is a Protein Coding gene.
Molecular Mass	91.7 kDa
AA Sequence	<p>MKEAALIYLDRSGGLQKFIDDCKYYNDSKQSYAVYRFKILINPSDVVELDAELGNHILH QPLKAAEVFQSVCFIAVKTLISLIGQLQTETQINIVLKLTHLPLPSYGLDLCEFPDYTS QRFYMMQGIVIAMTTITKYTQGARFLCSDEACPLSKGFQYIRVHVPGATESATIRNDF LCNLCASSLQEDRKFRVLGDKQIVEIATKALRAFQGYSNQPFQSLTIFLRDESV NKMNIGNEYKIIGIPTCVKTSQTAVCIEANSITFCNSKVPISGSDNFRCLLSLTSSSCW KFTAILANIFASQITPPGTYNLLKCLLSLVQTTDRNKELEDCLDILIITSDTLIDRLLN FSINLVPRGIRHLVSTEIFPTLSRNKYGTGAVSIQAGSALLAKGGICFIGDLASHKKDKL EQLQTVLESRSITVYIPGKKFGEDIDQQMTFPVQCSFWSFVDVDSRRNAQKINTLI GQMDCSLIPANLVEAFGLLINCNESSPCHPFLPTVQHTLNKAINPEGLFYAASRQFTT EDFEKLLAFKLNLFVFSLEAERMTHGYLASRRIRTGSVCGSKLSASALKYL</p>
Applications	Enzyme-linked Immunoabsorbent Assay Western Blot (Recombinant protein)

 Tel: 1-631-559-9269 1-516-512-3133

 Email: info@creative-biomart.com  Fax: 1-631-938-8127

 45-1 Ramsey Road, Shirley, NY 11967, USA

Antibody Production
Protein Array

Storage Store at -80 centigrade. Aliquot to avoid repeated freezing and thawing.

Storage Buffer 50 mM Tris-HCl, 10 mM reduced Glutathione, pH=8.0 in the elution buffer.

GENE INFORMATION

Gene Name [MCMDC2 minichromosome maintenance domain containing 2 \[Homo sapiens \]](#)

Official Symbol [MCMDC2](#)

Synonyms MCMDC2; minichromosome maintenance domain containing 2; C8orf45, chromosome 8 open reading frame 45; MCM domain-containing protein C8orf45; FLJ25692; C8orf45;

Gene ID [157777](#)

mRNA Refseq [NM_001136160](#)

Protein Refseq [NP_001129632](#)

MIM [617545](#)

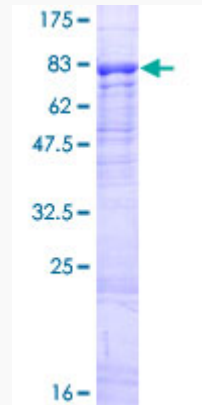
UniProt ID [Q4G0Z9](#)

 Tel: 1-631-559-9269 1-516-512-3133

 Email: info@creative-biomart.com  Fax: 1-631-938-8127

 45-1 Ramsey Road, Shirley, NY 11967, USA

**Quality Control
Testing**



12.5% SDS-PAGE Stained with Coomassie Blue.

 Tel: 1-631-559-9269 1-516-512-3133

 Email: info@creative-biomart.com  Fax: 1-631-938-8127

 45-1 Ramsey Road, Shirley, NY 11967, USA