

# Recombinant Escherichia coli MCR1 Full Length Transmembrane protein (1-541 aa), His-SUMO-tagged

Cat. No. MCR1-2371E Lot. No. (See product label)

## SPECIFICATION

<b>Product Overview</b>	Recombinant Escherichia coli MCR1 Protein (1-541 aa) is produced by E. coli expression system. This protein is fused with a 6xHis-SUMO tag at the N-terminal.
<b>Species</b>	E.coli
<b>Source</b>	E.coli
<b>ProteinLength</b>	1-541aa
<b>Form</b>	<p>If the delivery form is liquid, the default storage buffer is Tris/PBS-based buffer, 5%-50% glycerol.</p> <p>If the delivery form is lyophilized powder, the buffer before lyophilization is Tris/PBS-based buffer, 6% Trehalose, pH 8.0.</p>
<b>Molecular Mass</b>	76.1kDa
<b>AA Sequence</b>	<p>MMQHTSVWYRRSVSPFVLVASVAVFLTATANLTFDDKISQTYPIADNLGFVLTIAVVL            FGAMLLITLLSSYRYVLKPVLLLLIMGAVTSYFTDTYGTVYDTTMLQNALQTDQAET            KDLLNAAFIMRIIGLVLPSELLVAFVKVDYPTWGKGLMRRLGLIVASLALILLPVVAFSS            HYASFFRVHKPLRSYVNPIMPIYSVGKLASIEYKKASAPKDTIYHAKDAVQATKPDMR            KPRLVVFVGETARADHVSFNGYERDTFPQLAKIDGVTNFSNVTSCGTSTAYSVPC            MFSYLGADEYDVDTAKYQENVLDTLDRLGVSILWRDNNSDSKGVMDKLPKAQFADY            KSATNNAICNTNPYNECRDVGMLVGLDDFVAANNGKDMLIMLHQMGNHGPAYFKR            YDEKFAKFTPVCEGNELAKCEHQSLINAYDNALLATDDFIAQSIQWLQTHSNAYDVS</p>

 Tel: 1-631-559-9269 1-516-512-3133

 Email: [info@creative-biomart.com](mailto:info@creative-biomart.com)  Fax: 1-631-938-8127

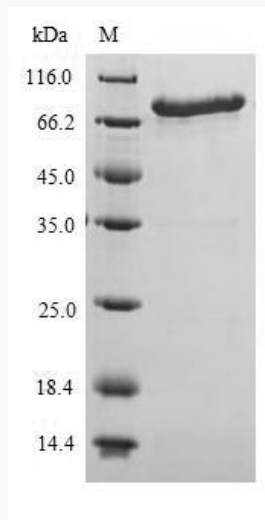
 45-1 Ramsey Road, Shirley, NY 11967, USA

MLYVSDHGESLGENGVYLHGMPNAFAPKEQRSVPAFFWTDKQTGITPMATDTVLT  
HDAITPTLLKLFVDVTADKVKDRTA FIR

**Purity** Greater than 90% as determined by SDS-PAGE.

**Storage** Store at -20°C/-80°C upon receipt, aliquoting is necessary for multiple use. Avoid repeated freeze-thaw cycles.

**Reconstitution** Please reconstitute protein in deionized sterile water to a concentration of 0.1-1.0 mg/mL. We recommend to add 5-50% of glycerol (final concentration) and aliquot for long-term storage at -20°C/-80°C. Our default final concentration of glycerol is 50%.

**SDS-PAGE**

 Tel: 1-631-559-9269 1-516-512-3133

 Email: [info@creative-biomart.com](mailto:info@creative-biomart.com)  Fax: 1-631-938-8127

 45-1 Ramsey Road, Shirley, NY 11967, USA