

## Recombinant Human MCRS1 Protein, GST-tagged

Cat. No. MCRS1-4510H Lot. No. (See product label)

### SPECIFICATION

**Product Overview** Human MCRS1 full-length ORF ( NP\_006328.2, 1 a.a. - 462 a.a.) recombinant protein with GST-tag at N-terminal.

**Species** Human

**Source** Wheat Germ

**Description** MCRS1 (Microspherule Protein 1) is a Protein Coding gene. Diseases associated with MCRS1 include Pigmented Basal Cell Carcinoma and Herpes Simplex. Among its related pathways are Influenza A and Deubiquitination. GO annotations related to this gene include histone acetyltransferase activity (H4-K5 specific) and histone acetyltransferase activity (H4-K16 specific).

**Molecular Mass** 78.2 kDa

**AA Sequence**

```
MDKDSQGLLDSSLMASGTASRSEDEESLAGQKRASSQALGTIPKRRSSSRFIKRKK
FDDELVESSLAKSSTRAKGASGVEPGRCSGSEPPSSSEKKKVSAPSTPVPSPAPA
PGLTKRVKSKQPLQVTKDLGRWKPADDLLLINAVLQTNDLTSVHLGVKFSRFTLR
EVQERWYALLYDPVISKLACQAMRQLHPEAIAAIQSKALFSKAEQLLSKVGSTSQP
TLETQDLLHRHPDAFYLRARTAKALQAHWQLMKQYYLLEDQTVQPLPKGDQVLNFS
DAEDLIDDSKCLKDMRDEVLEHELMVADRRQKREIRQLEQELHKWQVLVDSITGMSS
PDFDNQTLAVLRGRMVRYLMRSREITLGRATKDNQIDVDLSLEGPAAWKISRKQGVK
LKNNGDFFIANEGRRPIYIDGRPVLCGSKWRLSNNSVVEIASLRFVFLINQDLIALIRAE
AAKITPQ
```

 Tel: 1-631-559-9269 1-516-512-3133

 Email: [info@creative-biomart.com](mailto:info@creative-biomart.com)  Fax: 1-631-938-8127

 45-1 Ramsey Road, Shirley, NY 11967, USA

<b>Applications</b>	Enzyme-linked Immunoabsorbent Assay Western Blot (Recombinant protein) Antibody Production Protein Array
<b>Notes</b>	Best use within three months from the date of receipt of this protein.
<b>Storage</b>	Store at -80 centigrade. Aliquot to avoid repeated freezing and thawing.
<b>Storage Buffer</b>	50 mM Tris-HCl, 10 mM reduced Glutathione, pH=8.0 in the elution buffer.

## GENE INFORMATION

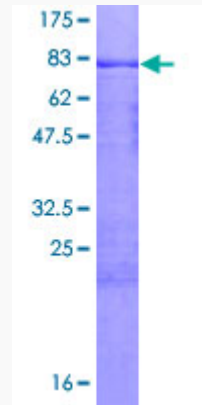
<b>Gene Name</b>	<a href="#">MCRS1 microspherule protein 1 [ Homo sapiens ]</a>
<b>Official Symbol</b>	<a href="#">MCRS1</a>
<b>Synonyms</b>	MCRS1; microspherule protein 1; ICP22BP; INO80 complex subunit Q; INO80Q; MCRS2; MSP58; P78; INO80 complex subunit J; 58 kDa microspherule protein; cell cycle-regulated factor p78; cell cycle-regulated factor (78 kDa);
<b>Gene ID</b>	<a href="#">10445</a>
<b>mRNA Refseq</b>	<a href="#">NM_001012300</a>
<b>Protein Refseq</b>	<a href="#">NP_001012300</a>
<b>MIM</b>	<a href="#">609504</a>
<b>UniProt ID</b>	<a href="#">Q96EZ8</a>

 Tel: 1-631-559-9269 1-516-512-3133

 Email: [info@creative-biomart.com](mailto:info@creative-biomart.com)  Fax: 1-631-938-8127

 45-1 Ramsey Road, Shirley, NY 11967, USA

**Quality Control  
Testing**



12.5% SDS-PAGE Stained with Coomassie Blue

 Tel: 1-631-559-9269 1-516-512-3133

 Email: [info@creative-biomart.com](mailto:info@creative-biomart.com)  Fax: 1-631-938-8127

 45-1 Ramsey Road, Shirley, NY 11967, USA