

## Recombinant Human MCTS1 Protein, GST-tagged

Cat. No. MCTS1-4506H Lot. No. (See product label)

### SPECIFICATION

<b>Product Overview</b>	Human MCTS1 full-length ORF ( AAH01013, 1 a.a. - 181 a.a.) recombinant protein with GST-tag at N-terminal.
<b>Species</b>	Human
<b>Source</b>	Wheat Germ
<b>Description</b>	MCTS1 (MCTS1, Re-Initiation And Release Factor) is a Protein Coding gene. GO annotations related to this gene include RNA binding and translation initiation factor activity.
<b>Molecular Mass</b>	45.65 kDa
<b>AA Sequence</b>	MFKKFDEKENVSNCIQLKTSVIKGIKNQLIEQFPGIEPWLNQIMPKKDPVKIVRCHEHI EILTVNGELLFFRQREGPFYPTLRLLLHKYPFILPHQQVDKGAIKFVLSGANIMCPGLTS PGAKLYPAAVDTIVAIMAEGKQHALCVGVMKMSAEDIEKVNKGIGIENIHYLNDGLLWH MKTYK
<b>Applications</b>	Enzyme-linked Immunoabsorbent Assay Western Blot (Recombinant protein) Antibody Production Protein Array
<b>Notes</b>	Best use within three months from the date of receipt of this protein.

 Tel: 1-631-559-9269 1-516-512-3133

 Email: [info@creative-biomart.com](mailto:info@creative-biomart.com)  Fax: 1-631-938-8127

 45-1 Ramsey Road, Shirley, NY 11967, USA

**Storage** Store at -80 centigrade. Aliquot to avoid repeated freezing and thawing.

**Storage Buffer** 50 mM Tris-HCl, 10 mM reduced Glutathione, pH=8.0 in the elution buffer.

## GENE INFORMATION

**Gene Name** MCTS1 malignant T cell amplified sequence 1 [ Homo sapiens ]

**Official Symbol** MCTS1

**Synonyms** MCTS1; malignant T cell amplified sequence 1; malignant T-cell-amplified sequence 1; MCT 1; multiple copies T-cell malignancies; malignant T cell-amplified sequence 1; MCT1; MCT-1; FLJ39637;

**Gene ID** 28985

**mRNA Refseq** NM\_001137554

**Protein Refseq** NP\_001131026

**MIM** 300587

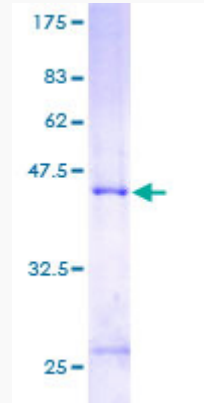
**UniProt ID** Q9ULC4

 Tel: 1-631-559-9269 1-516-512-3133

 Email: [info@creative-biomart.com](mailto:info@creative-biomart.com)  Fax: 1-631-938-8127

 45-1 Ramsey Road, Shirley, NY 11967, USA

**Quality Control  
Testing**



12.5% SDS-PAGE Stained with Coomassie Blue

 Tel: 1-631-559-9269 1-516-512-3133

 Email: [info@creative-biomart.com](mailto:info@creative-biomart.com)  Fax: 1-631-938-8127

 45-1 Ramsey Road, Shirley, NY 11967, USA