

## Recombinant Human MCU Protein, GST-tagged

Cat. No. MCU-4505H Lot. No. (See product label)

### SPECIFICATION

|                         |  |
|-------------------------|--|
| <b>Product Overview</b> | Human MCU full-length ORF ( NP_612366.1, 1 a.a. - 351 a.a.) recombinant protein with GST-tag at N-terminal.  |
| <b>Species</b>          | Human  |
| <b>Source</b>           | Wheat Germ   |
| <b>Description</b>      | This gene encodes a calcium transporter that localizes to the mitochondrial inner membrane. The encoded protein interacts with mitochondrial calcium uptake 1. Alternative splicing results in multiple transcript variants. [provided by RefSeq, Jul 2012]  |
| <b>Molecular Mass</b>   | 66.3 kDa   |
| <b>AA Sequence</b>      | <p>MAAAAGRLLLLLSSRGGGGGGAGGCGALTAGCFPLGVSRRHRQQQHHRTVHQR<br/> IASWQNLGAVYCSTVVPSSDDVTVVYQNGLPVISVRLPSRRERCQFTLKPISDSVGVF<br/> LRQLQEEDRGIDRVAIYSPDGVRVAASTGIDLLLLDDFKLVINDLTYHVRPPKRDLLSH<br/> ENAATLNDVKTLVQQLYTTLCIEQHQLNKERELIERLEDLKEQLAPLEKVRIEISRKAE<br/> KRTTLVLWGGLAYMATQFGILARLTWWEYSWDIMEPVTYFITYGSAMAMYAYFVMT<br/> RQEYVYPEARDRQYLLFFHKGAKKSRFDLEKYNQLKDAIAQAEMDLKRLRDPLQVH<br/> LPLRQIGEKD</p> |
| <b>Applications</b>     | <p>Enzyme-linked Immunoabsorbent Assay<br/> Western Blot (Recombinant protein)<br/> Antibody Production</p>  |

 Tel: 1-631-559-9269 1-516-512-3133

 Email: [info@creative-biomart.com](mailto:info@creative-biomart.com)  Fax: 1-631-938-8127

 45-1 Ramsey Road, Shirley, NY 11967, USA

**Protein Array**

|                       |  |
|-----------------------|--|
| <b>Notes</b>          | Best use within three months from the date of receipt of this protein.   |
| <b>Storage</b>        | Store at -80 centigrade. Aliquot to avoid repeated freezing and thawing. |
| <b>Storage Buffer</b> | 50 mM Tris-HCl, 10 mM reduced Glutathione, pH=8.0 in the elution buffer. |

**GENE INFORMATION**

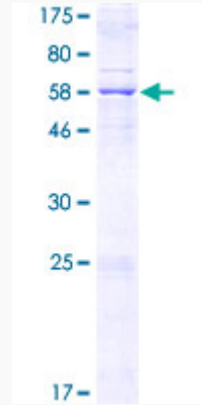
|                        |  |
|------------------------|--|
| <b>Gene Name</b>       | MCU mitochondrial calcium uniporter [ Homo sapiens ]     |
| <b>Official Symbol</b> | MCU  |
| <b>Synonyms</b>        | C10orf42; CCDC109A; MCU; mitochondrial calcium uniporter |
| <b>Gene ID</b>         | 90550  |
| <b>mRNA Refseq</b>     | NM_138357  |
| <b>Protein Refseq</b>  | NP_612366  |
| <b>MIM</b>             | 614197   |
| <b>UniProt ID</b>      | Q8NE86   |

 Tel: 1-631-559-9269 1-516-512-3133

 Email: [info@creative-biomart.com](mailto:info@creative-biomart.com)  Fax: 1-631-938-8127

 45-1 Ramsey Road, Shirley, NY 11967, USA

**Quality Control  
Testing**



12.5% SDS-PAGE Stained with Coomassie Blue

 Tel: 1-631-559-9269 1-516-512-3133

 Email: [info@creative-biomart.com](mailto:info@creative-biomart.com)  Fax: 1-631-938-8127

 45-1 Ramsey Road, Shirley, NY 11967, USA