

## MDA-MD-435S Whole Cell Lysate

**Cat. No.** MDA-MD-435S-01HL    **Lot. No.** (See product label)

### SPECIFICATION

**Product Overview**    MDA-MD-435S Whole Cell Lysate

**Species**    Human

**Source**    mammary gland ductal carcinoma

#### Lysate preparation

The cells were grown in Leibovitz's L-15 medium with 0.01 mg/mL insulin, supplemented with 10% fetal bovine serum. Cells were washed with PBS and then incubated on ice in modified RIPA buffer, containing 150 mM sodium chloride, 50 mM Tris HCl, pH 7.4, 1 mM EDTA, 1.0% NP-40, 0.5% sodium deoxycholic acid and 0.1% SDS, to lyse the cells. Protein integrity was ensured using a cocktail of protease inhibitors with broad specificity for the inhibition of aspartic, cysteine, and serine proteases as well as aminopeptidases (0.1 mM AEBSF HCl, 0.08 μM Aprotinin, 5 μM Bestatin, 1.5 μM E-64, 2 μM Leupeptin Hemisulfate, 1 μM Pepstatin A). Phosphatase inhibitors 1 mM NaF and 1 mM Na<sub>3</sub>VO<sub>4</sub> were also added. Cell debris was removed by centrifugation. Protein concentration was determined by a modified Lowry assay using a commercially available kit. Protein concentration was adjusted to 2 mg/mL and then an equal volume of 2× SDS-PAGE sample buffer was added.

#### Recommended Usage

Ready-to-use lysates are especially prepared as positive controls for separation by SDS-PAGE and subsequent western blot analysis. Lysates are prepared in denaturing buffer WITHOUT dissociating agents (i.e. no 2- mercaptoethanol or dithiothreitol has been added).

 Tel: 1-631-559-9269    1-516-512-3133

 Email: [info@creative-biomart.com](mailto:info@creative-biomart.com)     Fax: 1-631-938-8127

 45-1 Ramsey Road, Shirley, NY 11967, USA

**Storage**

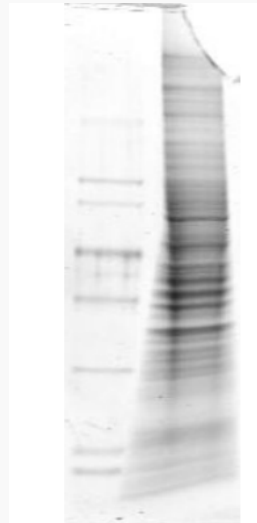
Store at 2-8 centigrade for continuous use. For extended storage, freeze working aliquots at -70 centigrade. Repeated freezing and thawing is not recommended. Under proper storage conditions the shelf life is half a year from the date of receipt.

**Storage Buffer**

1X SDS-PAGE Sample Buffer (62.5 mM Tris HCl, 2% SDS, 10% Glycerol and 0.005% bromophenol blue, pH 6.8)


**Concentration**

2 mg/mL

**SDS-PAGE**

 Tel: 1-631-559-9269 1-516-512-3133

 Email: [info@creative-biomart.com](mailto:info@creative-biomart.com)  Fax: 1-631-938-8127

 45-1 Ramsey Road, Shirley, NY 11967, USA