

Recombinant Human MDC1 Protein (1892-2082 aa), His-tagged

Cat. No. MDC1-2039H Lot. No. (See product label)

SPECIFICATION

Product Overview	Recombinant Human MDC1 Protein (1892-2082 aa) is produced by Yeast expression system. This protein is fused with a 6xHis tag at the N-terminal. Research Area: Epigenetics and Nuclear Signaling. Protein Description: Partial.
Species	Human
Source	Yeast
ProteinLength	1892-2082 aa
Description	Required for checkpoint mediated cell cycle arrest in response to DNA damage within both the S phase and G2/M phases of the cell cycle. May serve as a scaffold for the recruitment of DNA repair and signal transduction proteins to discrete foci of DNA damage marked by 'Ser-139' phosphorylation of histone H2AFX. Also required for downstream events subsequent to the recruitment of these proteins. These include phosphorylation and activation of the ATM, CHEK1 and CHEK2 kinases, and stabilization of TP53 and apoptosis. ATM and CHEK2 may also be activated independently by a parallel pathway mediated by TP53BP1.
Form	Tris-based buffer,50% glycerol
Molecular Mass	22.9 kDa
AA Sequence	APKVLFTGVVDARGERAVLALGGSLAGSAAEASHLVTDRIRRTVKFLCALGRGIPILS LDWLHQSRKAGFFLPPDEYVVTDPQEKNFGFSLQDALSRARERRLLEGYEIYVTP

 Tel: 1-631-559-9269 1-516-512-3133

 Email: info@creative-biomart.com  Fax: 1-631-938-8127

 45-1 Ramsey Road, Shirley, NY 11967, USA

GVQPPPPQMGEIISCCGGTYLPSMPRSYPQRVVITCPQDFPHCSIPLRVGLPLLSP
EFLLTGVKQEAKEAFVLS

Purity > 90% as determined by SDS-PAGE.

Notes Repeated freezing and thawing is not recommended. Store working aliquots at 4 centigrade for up to one week.

Storage The shelf life is related to many factors, storage state, buffer ingredients, storage temperature and the stability of the protein itself. Generally, the shelf life of liquid form is 6 months at -20 centigrade/-80 centigrade. The shelf life of lyophilized form is 12 months at -20 centigrade/-80 centigrade.

Concentration A hardcopy of COA with reconstitution instruction is sent along with the products.

GENE INFORMATION

Gene Name [MDC1 mediator of DNA-damage checkpoint 1 \[Homo sapiens \]](#)

Official Symbol [MDC1](#)

Synonyms MDC1; Em:AB023051.5; KIAA0170; NFBD1; MGC166888; DKFZp781A0122;

Gene ID [9656](#)

mRNA Refseq [NM_014641](#)

Protein Refseq [NP_055456](#)

MIM [607593](#)

 Tel: 1-631-559-9269 1-516-512-3133

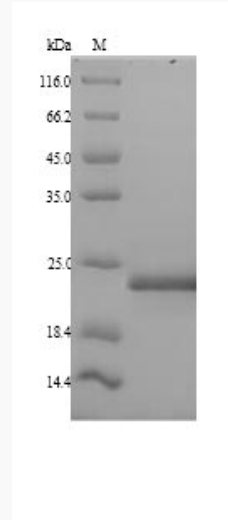
 Email: info@creative-biomart.com  Fax: 1-631-938-8127

 45-1 Ramsey Road, Shirley, NY 11967, USA



UniProt ID

Q14676



(Tris-Glycine gel) Discontinuous SDS-PAGE (reduced) with 5% enrichment gel and 15% separation gel.

Tel: 1-631-559-9269 1-516-512-3133

Email: info@creative-biomart.com Fax: 1-631-938-8127

45-1 Ramsey Road, Shirley, NY 11967, USA