

Recombinant Human MDH1B Protein, GST-tagged

Cat. No. MDH1B-4500H Lot. No. (See product label)

SPECIFICATION

Product Overview	Human MDH1B full-length ORF (NP_001034934.1, 1 a.a. - 518 a.a.) recombinant protein with GST-tag at N-terminal.
Species	Human
Source	Wheat Germ
Description	MDH1B (Malate Dehydrogenase 1B) is a Protein Coding gene. GO annotations related to this gene include oxidoreductase activity, acting on the CH-OH group of donors, NAD or NADP as acceptor and malate dehydrogenase activity. An important paralog of this gene is MDH1.
Molecular Mass	85.1 kDa
AA Sequence	MAKFVIAGRADCPYYAKTELVADYLQKNLPDFRIHKITQRPEVWEDWLKDVCEKNK WSHKNSPIIWRELLDRGGKGLLLGGYNEFLEHAQLYYDVTSSMTTELMMVIAQENL GAHIEKEQEEEEALKTCINPLQVWITSASAPACYNLIPILTSGEVFGMHTEISITLFDNKQ AEEHLKSLVVETQDLASPVLRSVSICTKVEEAFRQAHVIVVLLDDSTNKEVFTLEDCLR SRVPLCRLYGYLIEKNAHESVRVIVGGRTFVNLTLLMRYAPRIAHNIIAVALGVEGE AKAILARKLKTAPSYIKDVIIWGNISGNNYVDLRKTRVYRYESAIWGPLHYSRPVNLNIF DSEWVKREFVAILKNLTTTGRQFGGILAAHSIATTLKYWYHGSPGGEIVSLGILSEGQ FGIPKGIVFSMPVKFENGTVVVLTDLKDVEISEQIMTRMTSDLIQEKLVALGDKIHFQP YQSGHKDLVPDEEKNLAMSDAAEFPNQIPQTTFEKPKQSLEFLNEFEGKTVES
Applications	Enzyme-linked Immunoabsorbent Assay

Tel: 1-631-559-9269 1-516-512-3133

Email: info@creative-biomart.com Fax: 1-631-938-8127

45-1 Ramsey Road, Shirley, NY 11967, USA

Western Blot (Recombinant protein)
 Antibody Production
 Protein Array

Notes	Best use within three months from the date of receipt of this protein.
Storage	Store at -80 centigrade. Aliquot to avoid repeated freezing and thawing.
Storage Buffer	50 mM Tris-HCl, 10 mM reduced Glutathione, pH=8.0 in the elution buffer.

GENE INFORMATION

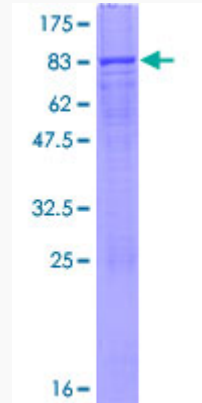
Gene Name	MDH1B malate dehydrogenase 1B [Homo sapiens (human)]
Official Symbol	MDH1B
Synonyms	MDH1B; malate dehydrogenase 1B; RP11-95H11; putative malate dehydrogenase 1B; malate dehydrogenase 1B, NAD (soluble); EC 1.1.1.-
Gene ID	130752
mRNA Refseq	NM_001039845
Protein Refseq	NP_001034934
UniProt ID	Q5I0G3

 Tel: 1-631-559-9269 1-516-512-3133

 Email: info@creative-biomart.com  Fax: 1-631-938-8127

 45-1 Ramsey Road, Shirley, NY 11967, USA

**Quality Control
Testing**



12.5% SDS-PAGE Stained with Coomassie Blue

 Tel: 1-631-559-9269 1-516-512-3133

 Email: info@creative-biomart.com  Fax: 1-631-938-8127

 45-1 Ramsey Road, Shirley, NY 11967, USA