

# Recombinant Full Length Human MDH2 Protein, C-Flag-tagged

Cat. No. MDH2-1619HFL Lot. No. (See product label)

## SPECIFICATION

**Product Overview** Recombinant Full Length Human MDH2 Protein, fused to Flag-tag at C-terminus, was expressed in Mammalian cells.

**Species** Human

**Source** Mammalian Cells

**Description** Malate dehydrogenase catalyzes the reversible oxidation of malate to oxaloacetate, utilizing the NAD/NADH cofactor system in the citric acid cycle. The protein encoded by this gene is localized to the mitochondria and may play pivotal roles in the malate-aspartate shuttle that operates in the metabolic coordination between cytosol and mitochondria. Several transcript variants encoding different isoforms have been found for this gene.

**Form** 25 mM Tris HCl, pH 7.3, 100 mM glycine, 10% glycerol.

**Molecular Mass** 35.3 kDa

**AA Sequence**  
MLSALARPVSAALRRSFSTSAQNNAKVAVLGASGGIGQPLSLLLKNSPLVSRLTLYDI  
AHTPGVAADLSH IETKAAVKGYLGPEQLPDCLKGCDVVVIPAGVPRKPGMTRDDL  
NTNATIVATLTAACAQHCPEAMICVI ANPVNSTIPITAEVFKKHGVYNPKNKIFGVTTLDI  
VRANTFVAELKGLDPARVNVPIVIGGHAGKTIPLIS QCTPKVDFPQDQLTALTGRIQE  
AGTEVVKAKAGAGSATLSMAYAGARFVFSLV DAMNGKEGVVECSFVKS  
QETECTYFSTPLLLGKKGIEKNLIGIGKVSSFEEKMISDAIPELKASIKKGEDFVKTLKT  
RTRPLEQKLISEEDLAANDILDYKDDDDKV

 Tel: 1-631-559-9269 1-516-512-3133

 Email: [info@creative-biomart.com](mailto:info@creative-biomart.com)  Fax: 1-631-938-8127

 45-1 Ramsey Road, Shirley, NY 11967, USA

<b>Purity</b>	> 80% as determined by SDS-PAGE and Coomassie blue staining.
<b>Stability</b>	Stable for 12 months from the date of receipt of the product under proper storage and handling conditions. Avoid repeated freeze-thaw cycles.
<b>Storage</b>	Store at -80 centigrade.
<b>Concentration</b>	>50 ug/mL as determined by microplate BCA method.
<b>Preparation</b>	Recombinant protein was captured through anti-DDK affinity column followed by conventional chromatography steps.
<b>Protein Families</b>	Druggable Genome
<b>Protein Pathways</b>	Citrate cycle (TCA cycle), Glyoxylate and dicarboxylate metabolism, Metabolic pathways, Pyruvate metabolism
<b>Full Length</b>	Full L.

## GENE INFORMATION

<b>Gene Name</b>	<a href="#">MDH2 malate dehydrogenase 2 [ Homo sapiens (human) ]</a>
<b>Official Symbol</b>	<a href="#">MDH2</a>
<b>Synonyms</b>	MDH; MOR1; DEE51; M-MDH; EIEE51; MGC:3559
<b>Gene ID</b>	<a href="#">4191</a>
<b>mRNA Refseq</b>	<a href="#">NM_005918.4</a>

 Tel: 1-631-559-9269 1-516-512-3133

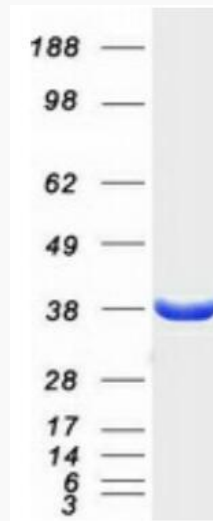
 Email: [info@creative-biomart.com](mailto:info@creative-biomart.com)  Fax: 1-631-938-8127

 45-1 Ramsey Road, Shirley, NY 11967, USA

Protein Refseq NP\_005909.2

MIM 154100

UniProt ID P40926



Coomassie blue staining of purified MDH2 protein.

Tel: 1-631-559-9269 1-516-512-3133

Email: [info@creative-biomart.com](mailto:info@creative-biomart.com) Fax: 1-631-938-8127

45-1 Ramsey Road, Shirley, NY 11967, USA