

# Recombinant Human MDH2 Protein, Myc/DDK-tagged, C13 and N15-labeled

**Cat. No.** MDH2-2010H    **Lot. No.** (See product label)

## SPECIFICATION

### Product Overview

MDH2 MS Standard C13 and N15-labeled recombinant protein (NP\_005909) with a C-terminal MYC/DDK tag, was expressed in HEK293 cells.

### Species

Human

### Source

HEK293

### Description

Malate dehydrogenase catalyzes the reversible oxidation of malate to oxaloacetate, utilizing the NAD/NADH cofactor system in the citric acid cycle. The protein encoded by this gene is localized to the mitochondria and may play pivotal roles in the malate-aspartate shuttle that operates in the metabolic coordination between cytosol and mitochondria. Several transcript variants encoding different isoforms have been found for this gene.

### Molecular Mass

35.5 kDa

### AA Sequence

MLSALARPVSAALRRSFSTSAQNNAKVAVLGASGGIGQPLSLLLKNSPLVSRLTLYDI  
 AHTPGVAADLSHIETKAAVKGYLGPEQLPDCLKGCDVVVIPAGVPRKPGMTRDDL  
 NTNATIVATLTAACAQHCPEAMICVIANPVNSTIPITAEVFKKHGVYNPNKIFGVTTLDI  
 VRANTFVAELKGLDPARVNVPIVGGHAGKTIIP LISQCTPKVDFPQDQLTALTGRIQEA  
 GTEVVKAKAGAGSATLSMAYAGARFVFLVDAMNGKEGVVECSFVKSQETECTYF  
 STPLLLGKKGIEKNLGIGKVSSFEEKMISDAIPELKASIKKGEDFVKTLKTRTRPLEQKL  
 ISEEDLAANDILDYKDDDDKV

 Tel: 1-631-559-9269    1-516-512-3133

 Email: [info@creative-biomart.com](mailto:info@creative-biomart.com)     Fax: 1-631-938-8127

 45-1 Ramsey Road, Shirley, NY 11967, USA

<b>Purity</b>	> 80% as determined by SDS-PAGE and Coomassie blue staining
<b>Stability</b>	Stable for 3 months from receipt of products under proper storage and handling conditions.
<b>Storage</b>	Store at -80 centigrade. Avoid repeated freeze-thaw cycles.
<b>Concentration</b>	50 µg/mL as determined by BCA
<b>Storage Buffer</b>	100 mM glycine, 25 mM Tris-HCl, pH 7.3.

## GENE INFORMATION

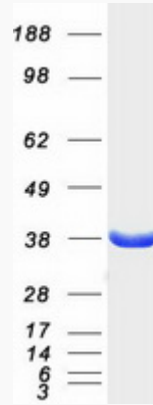
<b>Gene Name</b>	MDH2 malate dehydrogenase 2 [ Homo sapiens (human) ]
<b>Official Symbol</b>	MDH2
<b>Synonyms</b>	MDH2; malate dehydrogenase 2, NAD (mitochondrial); malate dehydrogenase, mitochondrial; MDH; MOR1; M-MDH; MGC:3559;
<b>Gene ID</b>	4191
<b>mRNA Refseq</b>	NM_005918
<b>Protein Refseq</b>	NP_005909
<b>MIM</b>	154100
<b>UniProt ID</b>	P40926

 Tel: 1-631-559-9269 1-516-512-3133

 Email: [info@creative-biomart.com](mailto:info@creative-biomart.com)  Fax: 1-631-938-8127

 45-1 Ramsey Road, Shirley, NY 11967, USA

**SDS-PAGE**



 Tel: 1-631-559-9269 1-516-512-3133

 Email: [info@creative-biomart.com](mailto:info@creative-biomart.com)  Fax: 1-631-938-8127

 45-1 Ramsey Road, Shirley, NY 11967, USA