

Recombinant Mouse MDH2 Protein, Full Length, N-6xHis tagged

Cat. No. MDH2-33MFL Lot. No. (See product label)

SPECIFICATION

Product Overview	Recombinant mouse Mdh2 protein (Full Length), fused to His-tag at N-terminus, was expressed in E. coli and purified by using conventional chromatography techniques.
Species	Mouse
Source	E.coli
ProteinLength	Full Length
Description	Enables L-malate dehydrogenase activity. Predicted to be involved in NADH metabolic process; dicarboxylic acid metabolic process; and tricarboxylic acid cycle. Located in membrane. Is expressed in several structures, including alimentary system; nervous system; respiratory system; sensory organ; and urinary system. Human ortholog(s) of this gene implicated in developmental and epileptic encephalopathy 51. Orthologous to human MDH2 (malate dehydrogenase 2).
Form	Liquid
Bio-activity	> 800 unit/mg, and is defined as the amount of enzyme that cleaves 1 μ mole of oxaloacetate and beta-NADH to L-malate and beta-NAD per minute at pH8.0 at 37 centigrade.
Molecular Mass	35.4 kDa (335aa) confirmed by MALDI-TOF

 Tel: 1-631-559-9269 1-516-512-3133

 Email: info@creative-biomart.com  Fax: 1-631-938-8127

 45-1 Ramsey Road, Shirley, NY 11967, USA

Purity	> 95% by SDS-PAGE
Applications	SDS-PAGE, Enzyme Activity
Storage	Can be stored at +2 to +8 centigrade for 1 week. For long term storage, aliquot and store at -20 to -80 centigrade. Avoid repeated freezing and thawing cycles.
Concentration	1 mg/mL (determined by absorbance at 280nm)
Storage Buffer	Phosphate-Buffered Saline (pH 7.4) containing 20% glycerol
References	<ol style="list-style-type: none"> 1. Wang L., et al. (2010) Dev Dyn. 239(3):954-64 2. Chang AK., et al. (2002) J Basic Microbiol. 42(4):238-45.

GENE INFORMATION

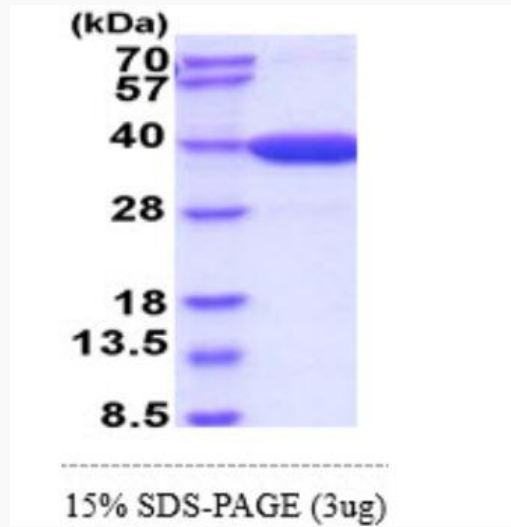
Gene Name	Mdh2 malate dehydrogenase 2, NAD (mitochondrial) [<i>Mus musculus</i>]
Official Symbol	MDH2
Synonyms	MDH2; malate dehydrogenase 2, NAD (mitochondrial); malate dehydrogenase, mitochondrial; mitochondrial malate dehydrogenase 2, NAD; MDH; Mor1; Mdh-2; Mor-1;
Gene ID	17448
mRNA Refseq	NM_008617
Protein Refseq	NP_032643
UniProt ID	P08249

 Tel: 1-631-559-9269 1-516-512-3133

 Email: info@creative-biomart.com  Fax: 1-631-938-8127

 45-1 Ramsey Road, Shirley, NY 11967, USA

SDS-PAGE



3 μ g by SDS-PAGE under reducing condition and visualized by coomassie blue stain.

 Tel: 1-631-559-9269 1-516-512-3133

 Email: info@creative-biomart.com  Fax: 1-631-938-8127

 45-1 Ramsey Road, Shirley, NY 11967, USA