

Recombinant Human MDH2 Protein, GST-tagged

Cat. No. MDH2-4498H Lot. No. (See product label)

SPECIFICATION

| | |
|-------------------------|--|
| Product Overview | Human MDH2 full-length ORF (NP_005909.2, 1 a.a. - 338 a.a.) recombinant protein with GST-tag at N-terminal. |
| Species | Human |
| Source | Wheat Germ |
| Description | Malate dehydrogenase catalyzes the reversible oxidation of malate to oxaloacetate, utilizing the NAD/NADH cofactor system in the citric acid cycle. The protein encoded by this gene is localized to the mitochondria and may play pivotal roles in the malate-aspartate shuttle that operates in the metabolic coordination between cytosol and mitochondria. [provided by RefSeq] |
| Molecular Mass | 61.9 kDa |
| AA Sequence | <p>MLSALARPASAALRRSFSTSAQNNAKVAVLGASGGIGQPLSLLLKNSPLVSRLTLYDI AHTPGVAADLSHIETKAAVKGYLGPEQLPDCLKGCDVVVIPAGVPRKPGMTRDDL NTNATIVATLTAACAQHCPEAMICVIANPVNSTIPITAEVFKKHGVYNPNKIFGVTTLDI VRANTFVAELKGLDPARVNVPIGGHAGKTIIP LISQCTPKVDFPQDQLTALTGRIQEA GTEVVKAKAGAGSATLSMAYAGARFVFLVDAMNGKEGVVECSFVKSQETECTYF STPLLLGKKGIEKNLIGIGKVSSFEEKMISDAIPELKASIKKGEDFVKTLK</p> |
| Applications | <p>Enzyme-linked Immunoabsorbent Assay Western Blot (Recombinant protein) Antibody Production</p> |

 Tel: 1-631-559-9269 1-516-512-3133

 Email: info@creative-biomart.com  Fax: 1-631-938-8127

 45-1 Ramsey Road, Shirley, NY 11967, USA

Protein Array

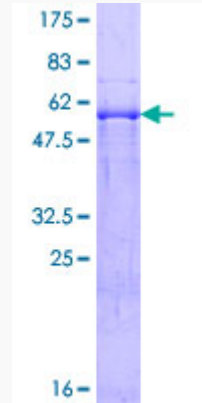
| | |
|-----------------------|--|
| Notes | Best use within three months from the date of receipt of this protein. |
| Storage | Store at -80 centigrade. Aliquot to avoid repeated freezing and thawing. |
| Storage Buffer | 50 mM Tris-HCl, 10 mM reduced Glutathione, pH=8.0 in the elution buffer. |

GENE INFORMATION

| | |
|------------------------|---|
| Gene Name | MDH2 malate dehydrogenase 2, NAD (mitochondrial) [Homo sapiens] |
| Official Symbol | MDH2 |
| Synonyms | MDH2; malate dehydrogenase 2, NAD (mitochondrial); malate dehydrogenase, mitochondrial; MDH; MOR1; M-MDH; MGC:3559; |
| Gene ID | 4191 |
| mRNA Refseq | NM_005918 |
| Protein Refseq | NP_005909 |
| MIM | 154100 |
| UniProt ID | P40926 |

 Tel: 1-631-559-9269 1-516-512-3133 Email: info@creative-biomart.com  Fax: 1-631-938-8127 45-1 Ramsey Road, Shirley, NY 11967, USA

**Quality Control
Testing**



12.5% SDS-PAGE Stained with Coomassie Blue

 Tel: 1-631-559-9269 1-516-512-3133

 Email: info@creative-biomart.com  Fax: 1-631-938-8127

 45-1 Ramsey Road, Shirley, NY 11967, USA