

Active Recombinant Human MDH2 Protein, His-tagged

Cat. No. MDH2-4499H Lot. No. (See product label)

SPECIFICATION

Product Overview	Human MDH2 (NP_005909, 25 a.a. - 338 a.a.) partial recombinant protein with His tag expressed in Escherichia coli.
Species	Human
Source	Wheat Germ
ProteinLength	25-338 a.a.
Description	Malate dehydrogenase catalyzes the reversible oxidation of malate to oxaloacetate, utilizing the NAD/NADH cofactor system in the citric acid cycle. The protein encoded by this gene is localized to the mitochondria and may play pivotal roles in the malate-aspartate shuttle that operates in the metabolic coordination between cytosol and mitochondria. [provided by RefSeq]
Form	Liquid
Bio-activity	Specific activity is > 30 units/mg, and is defined as the amount of enzyme that cleaves 1umole of oxalacetate and beta-NADH to L-malate and beta-NAD per minute at pH7.5 at 25 centigrade.
Molecular Mass	35.2 kDa
AA Sequence	MGSSHHHHHHSSGLVPRGSHMAKVAVLGASGGIGQPLSLLLKNSPLVSRLTLYDIA HTPGVAADLSHIETKAAVKGYLGPEQLPDCLKGCDVVVIPAGVPRKPGMTRDDLNT

 Tel: 1-631-559-9269 1-516-512-3133

 Email: info@creative-biomart.com  Fax: 1-631-938-8127

 45-1 Ramsey Road, Shirley, NY 11967, USA

NATIVATLTAACAQHCPEAMICVIANPVNSTIPITAEVFKKHGVYNPNKIFGVTTLDIVR
 ANTFVAELKGLDPARVNVPIVIGGHAGKTIIPILISQCTPKVDFPQDQLTALTGRIQEAGT
 EVVKAKAGAGSATLSMAYAGARFVFLVDAMNGKEGVVECSFVKSQETECTYFSTP
 LLLGKKGIEKNLGIGKVSSFEEKMISDAIPELKASIKKGEDFVKTLK

Purity > 95% by SDS-PAGE

Applications Functional Study
 SDS-PAGE

Storage Store at 4 centigrade for 1-2 weeks. For long term storage store at -20 centigrade or -80 centigrade. Aliquot to avoid repeated freezing and thawing.

Concentration 1 mg/mL

Storage Buffer In 20 mM Tris-HCl, pH 7.5 (10% glycerol)

GENE INFORMATION

Gene Name MDH2 malate dehydrogenase 2, NAD (mitochondrial) [Homo sapiens]

Official Symbol MDH2

Synonyms MDH2; malate dehydrogenase 2, NAD (mitochondrial); malate dehydrogenase, mitochondrial; MDH; MOR1; M-MDH; MGC:3559;

Gene ID 4191

mRNA Refseq NM_005918

Protein Refseq NP_005909

 Tel: 1-631-559-9269 1-516-512-3133

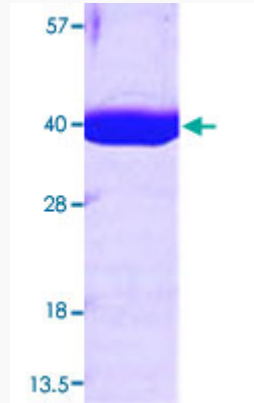
 Email: info@creative-biomart.com  Fax: 1-631-938-8127

 45-1 Ramsey Road, Shirley, NY 11967, USA

MIM 154100

UniProt ID P40926

**Quality Control
Testing**



Loading 3 μ g protein in 15% SDS-PAGE

 Tel: 1-631-559-9269 1-516-512-3133

 Email: info@creative-biomart.com  Fax: 1-631-938-8127

 45-1 Ramsey Road, Shirley, NY 11967, USA