

Recombinant Human MDH2 Protein (Ala25-Lys338), C-His tagged

Cat. No. MDH2-4525H Lot. No. (See product label)

SPECIFICATION

Product Overview	Recombinant human MDH2 (Ala25-Lys338) fused with the C-terminal His tag was expressed in Mammalian cells.
Species	Human
Source	Mammalian Cells
ProteinLength	Ala25-Lys338
Form	Lyophilized powder/frozen liquid
Molecular Mass	34.54 kDa
Purity	>90% as determined by SDS-PAGE.
Notes	For research use only.
Storage	Use a manual defrost freezer and avoid repeated freeze thaw cycles. Store at 2 to 8 centigrade for one week. Store at -20 to -80 centigrade for twelve months from the date of receipt.
Storage Buffer	Supplied as solution form in PBS or lyophilized from PBS.
Reconstitution	Reconstitute in sterile water for a stock solution.

 Tel: 1-631-559-9269 1-516-512-3133

 Email: info@creative-biomart.com  Fax: 1-631-938-8127

 45-1 Ramsey Road, Shirley, NY 11967, USA

Shipping They are shipped out with dry ice/blue ice unless customers require otherwise.

GENE INFORMATION

Gene Name MDH2 malate dehydrogenase 2, NAD (mitochondrial) [Homo sapiens (human)]

Official Symbol MDH2

Synonyms MDH2; malate dehydrogenase 2, NAD (mitochondrial); malate dehydrogenase, mitochondrial; MDH; MOR1; M-MDH; MGC:3559;

Gene ID 4191

mRNA Refseq NM_005918

Protein Refseq NP_005909

MIM 154100

UniProt ID P40926

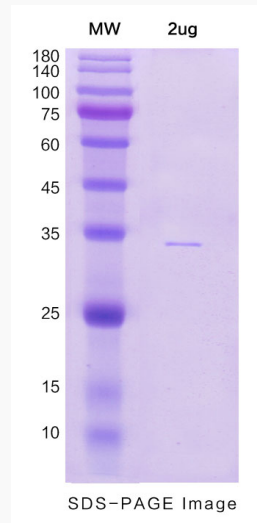
 Tel: 1-631-559-9269 1-516-512-3133

 Email: info@creative-biomart.com  Fax: 1-631-938-8127

 45-1 Ramsey Road, Shirley, NY 11967, USA



SDS-PAGE



Tel: 1-631-559-9269 1-516-512-3133

Email: info@creative-biomart.com Fax: 1-631-938-8127

45-1 Ramsey Road, Shirley, NY 11967, USA