

Recombinant Full Length Human MDK Protein, C-Flag-tagged

Cat. No. MDK-1214HFL Lot. No. (See product label)

SPECIFICATION

Product Overview	Recombinant Full Length Human MDK Protein, fused to Flag-tag at C-terminus, was expressed in Mammalian cells.
Species	Human
Source	Mammalian Cells
Description	This gene encodes a member of a small family of secreted growth factors that binds heparin and responds to retinoic acid. The encoded protein promotes cell growth, migration, and angiogenesis, in particular during tumorigenesis. This gene has been targeted as a therapeutic for a variety of different disorders. Alternatively spliced transcript variants encoding multiple isoforms have been observed.
Form	25 mM Tris HCl, pH 7.3, 100 mM glycine, 10% glycerol.
Molecular Mass	15.4 kDa
AA Sequence	MQHRGFLLLLTLLALLALTSVAVAKKKDKVKKGGPGSECAEWAWGPCTPSSKDCGVG FREGTCGAQTQRIRC RVPCNWKKEFGADCKYKFENWGACDGGTGTKVRQGTLLK ARYNAQCQETIRVTKPCTPKTKAKAKAKKGGK GKDTRTRPLEQKLISEEDLAANDILDYKDDDDKV
Purity	> 80% as determined by SDS-PAGE and Coomassie blue staining.
Stability	Stable for 12 months from the date of receipt of the product under proper storage and

Tel: 1-631-559-9269 1-516-512-3133

Email: info@creative-biomart.com Fax: 1-631-938-8127

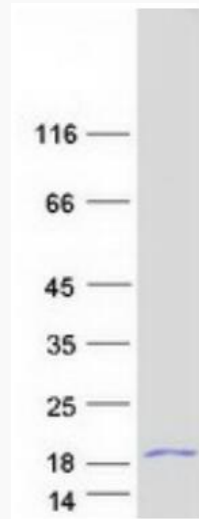
45-1 Ramsey Road, Shirley, NY 11967, USA

	handling conditions. Avoid repeated freeze-thaw cycles.
Storage	Store at -80 centigrade.
Concentration	>50 ug/mL as determined by microplate BCA method.
Preparation	Recombinant protein was captured through anti-DDK affinity column followed by conventional chromatography steps.
Protein Families	Druggable Genome, Secreted Protein, Transmembrane
Full Length	Full L.
GENE INFORMATION	
Gene Name	MDK midkine [Homo sapiens (human)]
Official Symbol	MDK
Synonyms	MK; ARAP; NEGF2
Gene ID	4192
mRNA Refseq	NM_001012333.3
Protein Refseq	NP_001012333.1
MIM	162096
UniProt ID	P21741

 Tel: 1-631-559-9269 1-516-512-3133

 Email: info@creative-biomart.com  Fax: 1-631-938-8127

 45-1 Ramsey Road, Shirley, NY 11967, USA



Coomassie blue staining of purified MDK protein.

 Tel: 1-631-559-9269 1-516-512-3133

 Email: info@creative-biomart.com  Fax: 1-631-938-8127

 45-1 Ramsey Road, Shirley, NY 11967, USA