

Active Recombinant Human MDK protein

Cat. No. MDK-197H Lot. No. (See product label)

SPECIFICATION

Product Overview	Recombinant Human MDK was expressed in E. coli.
Species	Human
Source	E.coli
Description	Midkine and its functionally-related protein Pleiotrophin (PTN), are heparin-binding neurotrophic factors that signal through the same receptor. Midkine is involved in a number of biological processes including the migration of neutrophils, inflammatory leukocytes, macrophages, neuronal cells, and osteoclasts. Midkine is a basic, non-glycosylated polypeptide that contains five intra-chain disulfide bonds. There is 87% identity between the human and murine Midkine and approximately 50% identity between human Midkine and human PTN with the conservation of all 10 cysteines.
Form	Lyophilized from a 0.2 µm filtered solution in PBS
Bio-activity	The ED (50) was determined by the dose-dependent proliferation of AsPC-1 cells and was found to be <0.5ng/mL.
Molecular Mass	14.0 kDa
Endotoxin	<1.0 EU/µg of recombinant protein as determined by the LAL method.
Purity	95%

 Tel: 1-631-559-9269 1-516-512-3133

 Email: info@creative-biomart.com  Fax: 1-631-938-8127

 45-1 Ramsey Road, Shirley, NY 11967, USA

Applications	Cell Assay
Storage	The lyophilized protein is stable for at least one year from date of receipt at -70 centigrade. Upon reconstitution, this cytokine can be stored in working aliquots at 2 centigrade- 8 centigrade for one month, or at -20 centigrade for six months, with a carrier protein without detectable loss of activity. Avoid repeated freeze/thaw cycles.
Reconstitution	Reconstitute at 0.1 mg/ml in sterile PBS

GENE INFORMATION

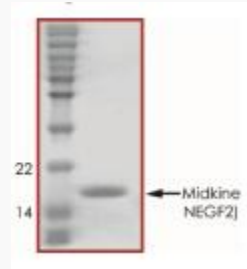
Gene Name	MDK midkine (neurite growth-promoting factor 2) [Homo sapiens]
Official Symbol	MDK
Synonyms	MDK; midkine (neurite growth-promoting factor 2); NEGF2; midkine; FLJ27379; MK; ARAP; amphiregulin-associated protein; midgestation and kidney protein; neurite outgrowth-promoting protein; neurite outgrowth-promoting factor 2;
Gene ID	4192
mRNA Refseq	NM_001012333
Protein Refseq	NP_001012333
MIM	162096
UniProt ID	P21741
Chromosome Location	11p11.2

 Tel: 1-631-559-9269 1-516-512-3133

 Email: info@creative-biomart.com  Fax: 1-631-938-8127

 45-1 Ramsey Road, Shirley, NY 11967, USA

Pathway	Glypican 2 network, organism-specific biosystem; Syndecan-4-mediated signaling events, organism-specific biosystem;
Function	growth factor activity; growth factor activity; heparin binding;



 Tel: 1-631-559-9269 1-516-512-3133

 Email: info@creative-biomart.com  Fax: 1-631-938-8127

 45-1 Ramsey Road, Shirley, NY 11967, USA