

Recombinant Human MDK Protein, His-tagged

Cat. No. MDK-2431H Lot. No. (See product label)

SPECIFICATION

Product Overview	Recombinant Human MDK Protein (Ala22-Asp143) with a N-His tag was expressed in E. coli.
Species	Human
Source	E.coli
ProteinLength	Ala22-Asp143
Description	This gene encodes a member of a small family of secreted growth factors that binds heparin and responds to retinoic acid. The encoded protein promotes cell growth, migration, and angiogenesis, in particular during tumorigenesis. This gene has been targeted as a therapeutic for a variety of different disorders. Alternatively spliced transcript variants encoding multiple isoforms have been observed.
Form	Freeze-dried powder
Molecular Mass	Predicted Molecular Mass: 20.0 kDa Accurate Molecular Mass: 20 kDa
Endotoxin	<1.0 EU per 1g (determined by the LAL method).
Purity	> 95%
Applications	Cell culture; Activity Assays.

 Tel: 1-631-559-9269 1-516-512-3133

 Email: info@creative-biomart.com  Fax: 1-631-938-8127

 45-1 Ramsey Road, Shirley, NY 11967, USA

Stability	The thermal stability is described by the loss rate. The loss rate was determined by accelerated thermal degradation test, that is, incubate the protein at 37 centigrade for 48h, and no obvious degradation and precipitation were observed. The loss rate is less than 5% within the expiration date under appropriate storage condition.
Storage	Avoid repeated freeze/thaw cycles. Store at 2-8 centigrade for one month. Aliquot and store at -80 centigrade for 12 months.
Storage Buffer	20mM Tris, 150mM NaCl, pH8.0, containing 1mM EDTA, 1mM DTT, 0.01% SKL, 5% Trehalose and Proclin300.
Reconstitution	Reconstitute in 20mM Tris, 150mM NaCl (pH8.0) to a concentration of 0.1-1.0 mg/mL. Do not vortex.

GENE INFORMATION

Gene Name	MDK midkine (neurite growth-promoting factor 2) [Homo sapiens (human)]
Official Symbol	MDK
Synonyms	MDK; midkine (neurite growth-promoting factor 2); NEGF2; midkine; FLJ27379; MK; ARAP; amphiregulin-associated protein; midgestation and kidney protein; neurite outgrowth-promoting protein; neurite outgrowth-promoting factor 2;
Gene ID	4192
mRNA Refseq	NM_001012333
Protein Refseq	NP_001012333
MIM	162096

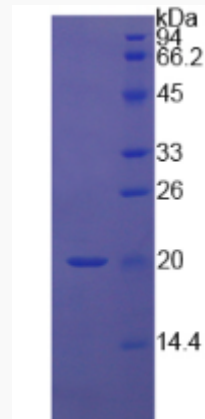
 Tel: 1-631-559-9269 1-516-512-3133

 Email: info@creative-biomart.com  Fax: 1-631-938-8127

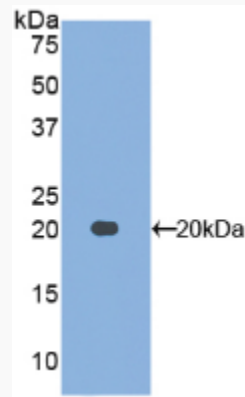
 45-1 Ramsey Road, Shirley, NY 11967, USA


UniProt ID

P21741



WB

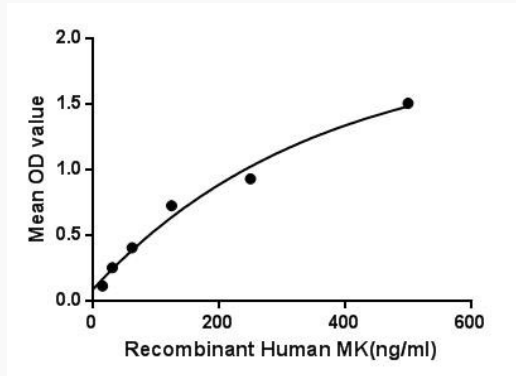


 Tel: 1-631-559-9269 1-516-512-3133

 Email: info@creative-biomart.com  Fax: 1-631-938-8127

 45-1 Ramsey Road, Shirley, NY 11967, USA

Bioactivity



Binding activity

 Tel: 1-631-559-9269 1-516-512-3133

 Email: info@creative-biomart.com  Fax: 1-631-938-8127

 45-1 Ramsey Road, Shirley, NY 11967, USA