

Recombinant Human MDK Protein, GST-tagged

Cat. No. MDK-4496H Lot. No. (See product label)

SPECIFICATION

Product Overview	Human MDK full-length ORF (AAH11704, 1 a.a. - 143 a.a.) recombinant protein with GST-tag at N-terminal.
Species	Human
Source	Wheat Germ
Description	This gene encodes a member of a small family of secreted growth factors that binds heparin and responds to retinoic acid. The encoded protein promotes cell growth, migration, and angiogenesis, in particular during tumorigenesis. This gene has been targeted as a therapeutic for a variety of different disorders. Alternatively spliced transcript variants encoding multiple isoforms have been observed. [provided by RefSeq, Jul 2012]
Molecular Mass	41.47 kDa
AA Sequence	MQHRGFLLLLTLLALLALTSVAKKKDKVKKGGPGSECAEWAWGPCAPSSKDCGVG FREGTCGAQTQRIRCRVPCNWKKEFGADCKYKFENWGACDGGTGTKVRQGTLKK ARYNAQCQETIRVTKPCTPKTKAKAKAKKGGKGD
Applications	Enzyme-linked Immunoabsorbent Assay Western Blot (Recombinant protein) Antibody Production Protein Array

 Tel: 1-631-559-9269 1-516-512-3133

 Email: info@creative-biomart.com  Fax: 1-631-938-8127

 45-1 Ramsey Road, Shirley, NY 11967, USA

Notes	Best use within three months from the date of receipt of this protein.
Storage	Store at -80 centigrade. Aliquot to avoid repeated freezing and thawing.
Storage Buffer	50 mM Tris-HCl, 10 mM reduced Glutathione, pH=8.0 in the elution buffer.

GENE INFORMATION

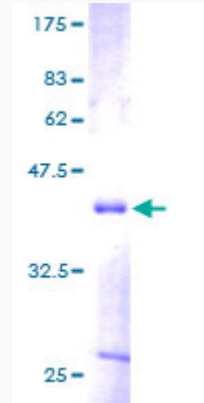
Gene Name	MDK midkine (neurite growth-promoting factor 2) [Homo sapiens]
Official Symbol	MDK
Synonyms	MDK; midkine (neurite growth-promoting factor 2); NEGF2; midkine; FLJ27379; MK; ARAP; amphiregulin-associated protein; midgestation and kidney protein; neurite outgrowth-promoting protein; neurite outgrowth-promoting factor 2;
Gene ID	4192
mRNA Refseq	NM_001012333
Protein Refseq	NP_001012333
MIM	162096
UniProt ID	P21741

 Tel: 1-631-559-9269 1-516-512-3133

 Email: info@creative-biomart.com  Fax: 1-631-938-8127

 45-1 Ramsey Road, Shirley, NY 11967, USA

**Quality Control
Testing**



12.5% SDS-PAGE Stained with Coomassie Blue

 Tel: 1-631-559-9269 1-516-512-3133

 Email: info@creative-biomart.com  Fax: 1-631-938-8127

 45-1 Ramsey Road, Shirley, NY 11967, USA