

Active Recombinant Human MDK protein

Cat. No. MDK-553H Lot. No. (See product label)

SPECIFICATION

Product Overview	Active Recombinant Human MDK protein(P21741) (Met 1-Asp 143) was expressed and purified in Insect Cells.
Species	Human
Source	Insect Cells
ProteinLength	1-143 aa
Form	Lyophilized from sterile 50mM PBS, 1 M NaCl, pH 6.8.
Bio-activity	Measured by its binding ability in a functional ELISA. Immobilized human MDK at 10 µg/ml (100 µl/well) can bind mouse SDC4-Fc with a linear range of 0.16-1.25 µg/ml.
Molecular Mass	The secreted recombinant human MDK consists of 123 amino acids and predicts a molecular mass of 13.4 kDa. It migrates as an approximately 18 kDa band in SDS-PAGE under reducing conditions.
Endotoxin	< 1 EU/g as determined by LAL test.
Purity	> 95 % as determined by SDS-PAGE
Storage	Store it under sterile conditions at -20°C to -80°C upon receiving. Recommend to aliquot the protein into smaller quantities for optimal storage. Avoid repeated freeze-thaw cycles.

 Tel: 1-631-559-9269 1-516-512-3133

 Email: info@creative-biomart.com  Fax: 1-631-938-8127

 45-1 Ramsey Road, Shirley, NY 11967, USA

Reconstitution It is recommended that sterile water be added to the vial to prepare a stock solution of 0.2 ug/ul. Centrifuge the vial at 4°C before opening to recover the entire contents.

GENE INFORMATION

Gene Name MDK midkine (neurite growth-promoting factor 2) [Homo sapiens]

Official Symbol MDK

Synonyms MDK; midkine (neurite growth-promoting factor 2); NEGF2; midkine; FLJ27379; MK; ARAP; amphiregulin-associated protein; midgestation and kidney protein; neurite outgrowth-promoting protein; neurite outgrowth-promoting factor 2;

Gene ID 4192

mRNA Refseq NM_001012333

Protein Refseq NP_001012333

MIM 162096

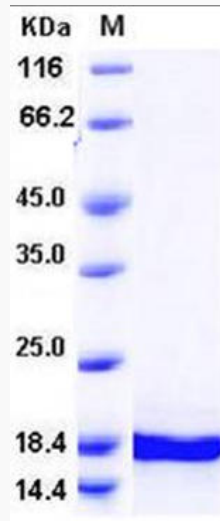
UniProt ID P21741

 Tel: 1-631-559-9269 1-516-512-3133

 Email: info@creative-biomart.com  Fax: 1-631-938-8127

 45-1 Ramsey Road, Shirley, NY 11967, USA

SDS-PAGE



 Tel: 1-631-559-9269 1-516-512-3133

 Email: info@creative-biomart.com  Fax: 1-631-938-8127

 45-1 Ramsey Road, Shirley, NY 11967, USA