

Recombinant Human MDK Protein, Myc/DDK-tagged, C13 and N15-labeled

Cat. No. MDK-5931H Lot. No. (See product label)

SPECIFICATION

Product Overview	MDK MS Standard C13 and N15-labeled recombinant protein (NP_001012333) with a C-terminal MYC/DDK tag, was expressed in HEK293 cells.
Species	Human
Source	HEK293
Description	This gene encodes a member of a small family of secreted growth factors that binds heparin and responds to retinoic acid. The encoded protein promotes cell growth, migration, and angiogenesis, in particular during tumorigenesis. This gene has been targeted as a therapeutic for a variety of different disorders. Alternatively spliced transcript variants encoding multiple isoforms have been observed.
Molecular Mass	15.6 kDa
AA Sequence	MQHRGFLLLTLLALLALTSVAKKKDKVKKGGPGSECAEWAWGPCTPSSKDCGVG FREGTCGAQTQRIRCRVPCNWKKEFGADCKYKFENWGACDGGTGTKVRQGTLKK ARYNAQCQETIRVTKPCTPKTKAKAKAKKGGKGDTRTRPLEQKLISEEDLAANDILDY KDDDDKV
Purity	> 80% as determined by SDS-PAGE and Coomassie blue staining
Stability	Stable for 3 months from receipt of products under proper storage and handling conditions.

 Tel: 1-631-559-9269 1-516-512-3133

 Email: info@creative-biomart.com  Fax: 1-631-938-8127

 45-1 Ramsey Road, Shirley, NY 11967, USA

Storage Store at -80 centigrade. Avoid repeated freeze-thaw cycles.

Concentration 50 µg/mL as determined by BCA

Storage Buffer 100 mM glycine, 25 mM Tris-HCl, pH 7.3.

GENE INFORMATION

Gene Name MDK midkine [Homo sapiens (human)]

Official Symbol MDK

Synonyms MDK; midkine (neurite growth-promoting factor 2); NEGF2; midkine; FLJ27379; MK; ARAP; amphiregulin-associated protein; midgestation and kidney protein; neurite outgrowth-promoting protein; neurite outgrowth-promoting factor 2;

Gene ID 4192

mRNA Refseq NM_001012333

Protein Refseq NP_001012333

MIM 162096

UniProt ID P21741

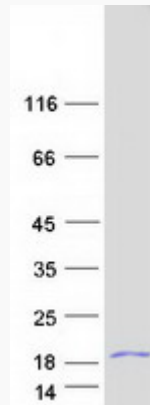
 Tel: 1-631-559-9269 1-516-512-3133

 Email: info@creative-biomart.com  Fax: 1-631-938-8127

 45-1 Ramsey Road, Shirley, NY 11967, USA



SDS-PAGE



Tel: 1-631-559-9269 1-516-512-3133

Email: info@creative-biomart.com Fax: 1-631-938-8127

45-1 Ramsey Road, Shirley, NY 11967, USA