

Recombinant Human MDM2 protein, His-tagged

Cat. No. MDM2-7854H Lot. No. (See product label)

SPECIFICATION

Product Overview	Recombinant Human MDM2 protein(110-298 aa), fused with N-terminal His tag, was expressed in E. coli.
Species	Human
Source	E.coli
ProteinLength	110-298 aa
Tag	N-His
Form	The purified protein was Lyophilized from sterile PBS (58mM Na ₂ HPO ₄ ,17mM NaH ₂ PO ₄ , 68mM NaCl, pH7.4). 5 % trehalose and 5 % mannitol are added as protectant before lyophilization.
Purity	85%, by SDS-PAGE with Coomassie Brilliant Blue staining.
Storage	Short-term storage: Store at 2-8°C for (1-2 weeks). Long-term storage: Aliquot and store at -20°C to -80°C for up to 3 months, reconstitution with sterile water and addition of an equal volume of glycerol. Avoid repeat freeze-thaw cycles.
Reconstitution	Reconstitute at 0.25 µg/µl in 200 µl sterile water for short-term storage. After reconstitution with sterile water, if glycerol has no effect on subsequent experiments, it is recommended to add an equal volume of glycerol for long-term storage.

 Tel: 1-631-559-9269 1-516-512-3133

 Email: info@creative-biomart.com  Fax: 1-631-938-8127

 45-1 Ramsey Road, Shirley, NY 11967, USA

AA Sequence

MVNQQESSDSGTSVSENRCHEGGSDQKDLVQELQEEKPSSSHLVSRPSTSSRRR
 AISETEENSDELGERQRKRHKSDSISLSFDESLALCVIREICCERSSSSESTGTSPN
 PDLDAVSEHSGDWLDQDSVSDQFSVEFEVESLSEEDYSLSEEGQELSDDEDDEVY
 QVTVYQAGESDTDSFEEDPEIS

GENE INFORMATION

Gene Name [MDM2 Mdm2, p53 E3 ubiquitin protein ligase homolog \(mouse\) \[Homo sapiens \]](#)

Official Symbol [MDM2](#)

Synonyms

MDM2; Mdm2, p53 E3 ubiquitin protein ligase homolog (mouse); Mdm2 p53 binding protein homolog (mouse) , Mdm2, transformed 3T3 cell double minute 2, p53 binding protein (mouse) , mouse double minute 2, human homolog of; p53 binding protein; E3 ubiquitin-protein ligase Mdm2; HDM2; HDMX; MGC5370; oncoprotein Mdm2; MDM2 variant FB28; MDM2 variant FB30; double minute 2, human homolog of; p53-binding protein; Mdm2, transformed 3T3 cell double minute 2, p53 binding protein; hdm2; ACTFS; MGC71221;

Gene ID [4193](#)

mRNA Refseq [NM_002392](#)

Protein Refseq [NP_002383](#)

MIM [164785](#)

UniProt ID [Q00987](#)

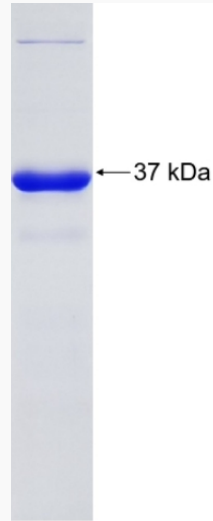
 Tel: 1-631-559-9269 1-516-512-3133

 Email: info@creative-biomart.com  Fax: 1-631-938-8127

 45-1 Ramsey Road, Shirley, NY 11967, USA



SDS-PAGE



Tel: 1-631-559-9269 1-516-512-3133

Email: info@creative-biomart.com Fax: 1-631-938-8127

45-1 Ramsey Road, Shirley, NY 11967, USA