

Recombinant Entamoeba Histolytica MDR1 Protein (1-114 aa), His-tagged

Cat. No. MDR1-1315E **Lot. No.** (See product label)

SPECIFICATION

Product Overview	Recombinant Entamoeba Histolytica MDR1 Protein (1-114 aa) is produced by Yeast expression system. This protein is fused with a 6xHis tag at the N-terminal. Protein Description: Full Length.
Species	Entamoeba Histolytica
Source	Yeast
ProteinLength	1-114 aa
Description	Energy-dependent efflux pump responsible for decreased drug accumulation in multidrug-resistant cells.
Form	Tris-based buffer,50% glycerol
Molecular Mass	14.5 kDa
AA Sequence	SGCGKSTTIQLIQRNYEPNGGRVTLDGKDIRELNIKWLRNQIGLVGQEPVLFAGTIRE NIMLGAKEGETLSKDEMIECAKMANAHEFVSKLAEGYDTLIGEKGALLSGGQRQRI
Purity	> 90% as determined by SDS-PAGE.
Notes	Repeated freezing and thawing is not recommended. Store working aliquots at 4 centigrade for up to one week.

 Tel: 1-631-559-9269 1-516-512-3133

 Email: info@creative-biomart.com  Fax: 1-631-938-8127

 45-1 Ramsey Road, Shirley, NY 11967, USA

Storage

The shelf life is related to many factors, storage state, buffer ingredients, storage temperature and the stability of the protein itself. Generally, the shelf life of liquid form is 6 months at -20 centigrade/-80 centigrade. The shelf life of lyophilized form is 12 months at -20 centigrade/-80 centigrade.

Concentration

A hardcopy of COA with reconstitution instruction is sent along with the products. Please refer to it for detailed information.

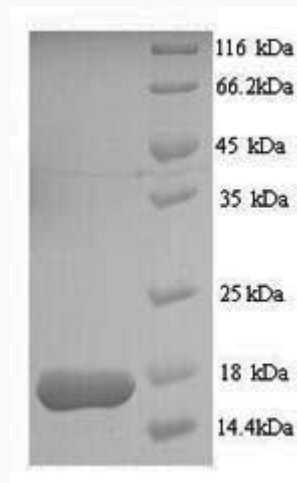
GENE INFORMATION

Synonyms

MDR1; P-glycoprotein;

UniProt ID

[P16875](https://www.uniprot.org/entry/P16875)



(Tris-Glycine gel) Discontinuous SDS-PAGE (reduced) with 5% enrichment gel and 15% separation gel.

 Tel: 1-631-559-9269 1-516-512-3133

 Email: info@creative-biomart.com  Fax: 1-631-938-8127

 45-1 Ramsey Road, Shirley, NY 11967, USA