

Recombinant Human ME1 Protein, C-6xHis tagged

Cat. No. ME1-18H Lot. No. (See product label)

SPECIFICATION

Product Overview	Recombinant Human ME1 Protein with C-6xHis tag was expressed in E. coli.
Species	Human
Source	E.coli
Description	Enables cytokine activity and growth factor activity. Acts upstream of or within several processes, including animal organ development; generation of neurons; and positive regulation of macromolecule metabolic process. Located in extracellular space. Is expressed in several structures, including alimentary system; central nervous system; cranium; early conceptus; and female reproductive system. Orthologous to human LIF (LIF interleukin 6 family cytokine).
Molecular Mass	65.2 KD
AA Sequence	<p>MEPEAPRRRHQTHQRGYLLTRNPHLNKDLAFTLEERQQLNIHGLLPPSFNSQEIQVLR VVKNF EHLNSDFDRYLLMLDQDRNEKLFYRVLTSDIEKFMPIVYTPTVGLACQQYSL VFRKPRGLFITIHDRGHASVLNAWPEDVIKAIVVT DGERILGLGDLGCNGMGIPVGKL ALYTACGGMNPQECLPVILDVGTENEELLKDPLYIGLRQRRVRGSEYDDFLDEFMEA VSSKYGMNCLIQFEDFANVNAFRLLNKYRNQYCTFNDDIQGTASVAVAGLLAALRIT KNKLS DQTILFQGAGEAALGIAHLIVMALEKEGLPKEKAIKKIWLVD SKGLIVKGRASL TQEKEKFAHEHEEMKNLEAIVQEIKPTALIGVAAIGGAFSEQILKDMAAFNERPIIFALS NPTS KAEC SAEQCYKITKGRAIFASGSPFPDPTLPNGQTLYPGQGNN SYVFP GVAL GVVACGLRQITDNIFLTTAEVIAQQVSDKHLEEGRLYPPLNTIRDVSLKIAEKIVKDAY</p>

 Tel: 1-631-559-9269 1-516-512-3133

 Email: info@creative-biomart.com  Fax: 1-631-938-8127

 45-1 Ramsey Road, Shirley, NY 11967, USA

	QEKTATVYPEPQNKEAFVRSQMYSTDYDQILPDCYSWP EEVQKIQT KVDQLEHHHH HH
Purity	> 95% by SDS-PAGE
Usage	Protein binding assay, small molecule inhibitor screening, substrate of kinase, antigen, ELISA, Western blot, crystallization and co- crystallization studies.
Storage	Upon delivery aliquot and store at -80 centigrade. Avoid multiple freeze-thaw cycles. The protein is stable for 12 months at -80 centigrade, for 2-4 weeks at 4 centigrade.
Storage Buffer	30 mM Tris pH 7.4; 500 mM NaCl; 10% glycerol; 3 mM MgCl ₂ ; 5 mM beta-mercaptoethanol; 1 mM PMSF; 1 mM Benzamidine
Reconstitution	Clear solution in 30 mM Tris, pH7.4, 150 mM NaCl, 40% Glycerol, 5 mM DTT

GENE INFORMATION

Gene Name	ME1 malic enzyme 1, NADP(+)-dependent, cytosolic [Homo sapiens (human)]
Official Symbol	ME1
Synonyms	ME1; malic enzyme 1, NADP(+)-dependent, cytosolic; NADP-dependent malic enzyme; NADP-ME; malate dehydrogenase; malic enzyme 1, soluble; Malic enzyme, cytoplasmic; pyruvic-malic carboxylase; MES; HUMNDME;
Gene ID	4199
mRNA Refseq	NM_002395
Protein Refseq	NP_002386

 Tel: 1-631-559-9269 1-516-512-3133

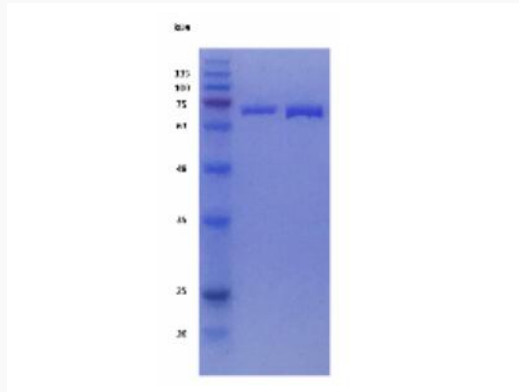
 Email: info@creative-biomart.com  Fax: 1-631-938-8127

 45-1 Ramsey Road, Shirley, NY 11967, USA

MIM 154250

UniProt ID P48163

SDS-PAGE



 Tel: 1-631-559-9269 1-516-512-3133

 Email: info@creative-biomart.com  Fax: 1-631-938-8127

 45-1 Ramsey Road, Shirley, NY 11967, USA