

# Recombinant Human ME1 Protein, Myc/DDK-tagged, C13 and N15-labeled

**Cat. No.** ME1-5947H    **Lot. No.** (See product label)

## SPECIFICATION

### Product Overview

ME1 MS Standard C13 and N15-labeled recombinant protein (NP\_002386) with a C-terminal MYC/DDK tag, was expressed in HEK293 cells.

### Species

Human

### Source

HEK293

### Description

This gene encodes a cytosolic, NADP-dependent enzyme that generates NADPH for fatty acid biosynthesis. The activity of this enzyme, the reversible oxidative decarboxylation of malate, links the glycolytic and citric acid cycles. The regulation of expression for this gene is complex. Increased expression can result from elevated levels of thyroid hormones or by higher proportions of carbohydrates in the diet.

### Molecular Mass

64.1 kDa

### AA Sequence

MEPEAPRRRHTHQRGYLLTRNPHLNKDLAFTLEERQQLNIHGLLPPSFNSQEIQVLR  
 VVKNFEHLNSDFDRYLLMLDQDRNEKLFYRVLTSDIEKFMPIVYTPVGLACQQYSL  
 VFRKPRGLFITIHDRGHASVLNAWPEDVIKAIIVTDGERILGLGDLGCNGMGIPVGKL  
 ALYTACGGMNPQECLPVILDVGTENEELLKDPLYIGLRQRRVRGSEYDDFLDEFMEA  
 VSSKYGMNCLIQFEDFANVNAFRLLNKYRNQYCTFNDDIQGTASVAVAGLLAALRIT  
 KNKLSAQITLFGGAGEAALGIAHLIVMALEKEGLPKEKAIKKIWLVDKGLIVKGRASL  
 TQEKEKFAHEHEEMKNLEAIVQEIKPTALIGVAAIGGAFSEQILKDMAAFNERPIIFALS  
 NPTSKAECSAEQCYKITKGRAIFASGSPFDPVTLPNGQTLYPGQGNNNSYVFPGVAL

 Tel: 1-631-559-9269    1-516-512-3133

 Email: [info@creative-biomart.com](mailto:info@creative-biomart.com)     Fax: 1-631-938-8127

 45-1 Ramsey Road, Shirley, NY 11967, USA

GVVACGLRQITDNIFLTTAEVIAQQVSDKHLEEGRLYPPLNTIRDVSLKIAEKIVKDAY  
 QEKTATVYPEPQNKEAFVRSQMYSTDYDQILPDCYSWPPEEVQKIQTkVDQTRTRPL  
 EQKLISEEDLAANDILDYKDDDDKV

**Purity** > 80% as determined by SDS-PAGE and Coomassie blue staining

**Stability** Stable for 3 months from receipt of products under proper storage and handling conditions.

**Storage** Store at -80 centigrade. Avoid repeated freeze-thaw cycles.

**Concentration** 50 µg/mL as determined by BCA

**Storage Buffer** 100 mM glycine, 25 mM Tris-HCl, pH 7.3.

## GENE INFORMATION

**Gene Name** ME1 malic enzyme 1 [ Homo sapiens (human) ]

**Official Symbol** ME1

**Synonyms** ME1; malic enzyme 1, NADP(+)-dependent, cytosolic; NADP-dependent malic enzyme; NADP-ME; malate dehydrogenase; malic enzyme 1, soluble; Malic enzyme, cytoplasmic; pyruvic-malic carboxylase; MES; HUMNDME;

**Gene ID** 4199

**mRNA Refseq** NM\_002395

**Protein Refseq** NP\_002386

 Tel: 1-631-559-9269 1-516-512-3133

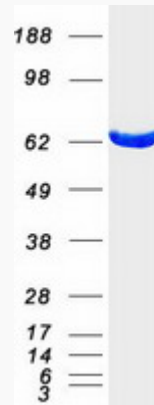
 Email: [info@creative-biomart.com](mailto:info@creative-biomart.com)  Fax: 1-631-938-8127

 45-1 Ramsey Road, Shirley, NY 11967, USA

MIM 154250

UniProt ID P48163

SDS-PAGE



 Tel: 1-631-559-9269 1-516-512-3133

 Email: [info@creative-biomart.com](mailto:info@creative-biomart.com)  Fax: 1-631-938-8127

 45-1 Ramsey Road, Shirley, NY 11967, USA