

Recombinant Human ME2 protein, His & T7-tagged

Cat. No. ME2-1545H **Lot. No.** (See product label)

SPECIFICATION

Product Overview	Recombinant Human ME2 aa. (Gly220~Ala426 (Accession # P23368)) fused with N-terminal His & T7 tag was produced in E. coli cells.
Species	Human
Source	E.coli
ProteinLength	Gly220~Ala426
Description	This gene encodes a mitochondrial NAD-dependent malic enzyme, a homotetrameric protein, that catalyzes the oxidative decarboxylation of malate to pyruvate. It had previously been weakly linked to a syndrome known as Friedreich ataxia that has since been shown to be the result of mutation in a completely different gene. Certain single-nucleotide polymorphism haplotypes of this gene have been shown to increase the risk for idiopathic generalized epilepsy. Alternatively spliced transcript variants encoding different isoforms found for this gene.
Form	Freeze-dried powder
Molecular Mass	Predicted Molecular Mass: 26.8kDa
Endotoxin	<1.0EU per 1ug (determined by the LAL method)
Purity	>95%

 Tel: 1-631-559-9269 1-516-512-3133

 Email: info@creative-biomart.com  Fax: 1-631-938-8127

 45-1 Ramsey Road, Shirley, NY 11967, USA

Applications	SDS-PAGE; WB; ELISA; IP.
Stability	The thermal stability is described by the loss rate. The loss rate was determined by accelerated thermal degradation test, that is, incubate the protein at 37°C for 48h, and no obvious degradation and precipitation were observed. The loss rate is less than 5% within the expiration date under appropriate storage condition.
Storage	Avoid repeated freeze/thaw cycles. Store at 2-8°C for one month. Aliquot and store at -80°C for 12 months.
Storage buffer	Supplied as lyophilized form in PBS, pH7.4, containing 5% trehalose, 0.01% sarcosyl.
Reconstitution	Reconstitute in sterile PBS, pH7.2-pH7.4.
Isoelectric Point	7

GENE INFORMATION

Gene Name	ME2 malic enzyme 2 [Homo sapiens (human)]
Official Symbol	ME2
Synonyms	ME2; malic enzyme 2; ODS1; NAD-dependent malic enzyme, mitochondrial; NAD-ME; malate dehydrogenase (oxaloacetate-decarboxylating); malic enzyme 2, NAD(+)-dependent, mitochondrial; pyruvic-malic carboxylase
Gene ID	4200
mRNA Refseq	NM_001168335.1
Protein Refseq	NP_001161807.1

 Tel: 1-631-559-9269 1-516-512-3133

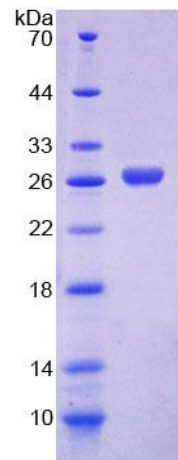
 Email: info@creative-biomart.com  Fax: 1-631-938-8127

 45-1 Ramsey Road, Shirley, NY 11967, USA

UniProt ID

P23368

SDS-PAGE



 Tel: 1-631-559-9269 1-516-512-3133

 Email: info@creative-biomart.com  Fax: 1-631-938-8127

 45-1 Ramsey Road, Shirley, NY 11967, USA