

Recombinant Full Length Human ME2 Protein, C-Flag-tagged

Cat. No. ME2-198HFL Lot. No. (See product label)

SPECIFICATION

Product Overview	Recombinant Full Length Human ME2 Protein, fused to Flag-tag at C-terminus, was expressed in Mammalian cells.
Species	Human
Source	Mammalian Cells
Description	This gene encodes a mitochondrial NAD-dependent malic enzyme, a homotetrameric protein, that catalyzes the oxidative decarboxylation of malate to pyruvate. It had previously been weakly linked to a syndrome known as Friedreich ataxia that has since been shown to be the result of mutation in a completely different gene. Certain single-nucleotide polymorphism haplotypes of this gene have been shown to increase the risk for idiopathic generalized epilepsy. Alternatively spliced transcript variants encoding different isoforms found for this gene.
Form	25 mM Tris HCl, pH 7.3, 100 mM glycine, 10% glycerol.
Molecular Mass	63.4 kDa
AA Sequence	<pre> MLSRLRVVSTTCTLACRHLHIKEK GKPLMLNPRTNKGMAFTLQERQMLGLQGLLPP KIETQDIQALRFHR NLKKMTSPLEKYIYIMGIQERNEKLFYRILQDDIESLMPIVYTPTV GLACSQYGHIFRRPKGLFISISDR GHVRSIVDNWPENHVKAVVVTGGERILGLGLDLG VYGMGIPVVKLCLYTACAGIRPDRCLPVCIDVGTDNI ALLKDPFYMGLYQKRDRDRTQQ YDDLIDEFMKAITDRYGRNTLIQFEDFGNHNAFRFLRKYREKYCTFNDDI QGTAAVA LAGLLAAQKVISKPISEHKILFLGAGEAALGIANLIVMSMVENGLSEQEAQKKIWMFDK </pre>

 Tel: 1-631-559-9269 1-516-512-3133

 Email: info@creative-biomart.com  Fax: 1-631-938-8127

 45-1 Ramsey Road, Shirley, NY 11967, USA

YGLL VKGRKAKIDSYQEPFTHSAPESIPDTFEDAVNILKPSTIIGVAGAGRLFTPDVIR
 AMASINERPVIFALS NPTAQAECTAEEAYTLTEGRCLFASGSPFGPVKLT DGRVFTP
 GQGNNVYIFPGVALAVILCNTRHISDSV FLEAAKALTSQLTDEELAQGRLYPPLANIQ
 EVSINIAIKVTEYLYANKMAFRYPEPEDKAKYVKERTWRS
 EYDSLLPDVYEWPEASASSPPVITETRTRPLEQKLISEEDLAANDILDYKDDDDKV

Purity	> 80% as determined by SDS-PAGE and Coomassie blue staining.
Stability	Stable for 12 months from the date of receipt of the product under proper storage and handling conditions. Avoid repeated freeze-thaw cycles.
Storage	Store at -80 centigrade.
Concentration	>50 ug/mL as determined by microplate BCA method.
Preparation	Recombinant protein was captured through anti-DDK affinity column followed by conventional chromatography steps.
Protein Pathways	Pyruvate metabolism
Full Length	Full L.

GENE INFORMATION

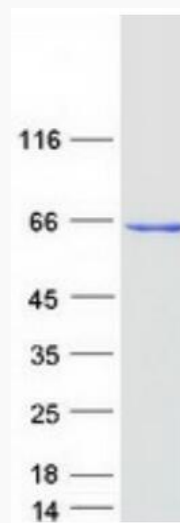
Gene Name	ME2 malic enzyme 2 [Homo sapiens (human)]
Official Symbol	ME2
Synonyms	ODS1
Gene ID	4200

mRNA Refseq [NM_002396.5](#)

Protein Refseq [NP_002387.1](#)

MIM [154270](#)

UniProt ID [P23368](#)



Coomassie blue staining of purified ME2 protein.

 Tel: 1-631-559-9269 1-516-512-3133

 Email: info@creative-biomart.com  Fax: 1-631-938-8127

 45-1 Ramsey Road, Shirley, NY 11967, USA