

## Recombinant Human ME2 Protein, C-6xHis tagged

Cat. No. ME2-19H Lot. No. (See product label)

### SPECIFICATION

<b>Product Overview</b>	Recombinant Human ME2 Protein with C-6xHis tag was expressed in E. coli.
<b>Species</b>	Human
<b>Source</b>	E.coli
<b>Description</b>	Enables cytokine activity and growth factor activity. Acts upstream of or within several processes, including animal organ development; generation of neurons; and positive regulation of macromolecule metabolic process. Located in extracellular space. Is expressed in several structures, including alimentary system; central nervous system; cranium; early conceptus; and female reproductive system. Orthologous to human LIF (LIF interleukin 6 family cytokine).
<b>Molecular Mass</b>	64.4 KD
<b>AA Sequence</b>	<p>MIKEK GKPLMLNPR TNKGMAFTLQERQMLGLQGLLPPKIETQDIQALRFHRNLKKMT            SPLEKYIYIMGIQERNEKLFYRILQDDIESLMPIVYTPTVGLACSQYGHIFRRPKGLFISI            SDRGHVRSIVDNWPENHVKAVVVDGERILGLGDLGVYGMGIPVGKLCCLYTACAGIR            PDRCLPVCIDVGTDNIALLKDPFYMGLYQKRDR TQQYDDLIDEFMKAITDRYGRNTLI            QFEDFGNHNAFRFLRKYREKYCTFNDDIQGTA AVALAGLLAAQKVISKPISEHKILFL            GAGEAALGIANLIVMSMVENGLSEQEAQKKIWMFDKYGLLVKGRKAKIDSYQEPFTH            SAPESIPDTFEDAVNILKPSTIIGVAGAGRLFTP DVIRAMASINERPVIFALS NPTAQAE            CTAE EAYTLTEGRCLFASGSPFGPVKLTDRVFTPGQGNNVYIFPGVALAVILCNTR            HISDSVFLEAAKALTSQ L TDEELAQGRLYPPLANIQEVSINIAIKVTEYLYANKMAFRY</p>

 Tel: 1-631-559-9269 1-516-512-3133

 Email: [info@creative-biomart.com](mailto:info@creative-biomart.com)  Fax: 1-631-938-8127

 45-1 Ramsey Road, Shirley, NY 11967, USA

	PEPEDKAKYVKERTWRSEYDSLPPDVYEWPEASASSPPVITELEHHHHHH
<b>Purity</b>	> 95% by SDS-PAGE
<b>Usage</b>	Protein binding assay, small molecule inhibitor screening, substrate of kinase, antigen, ELISA, Western blot, crystallization and co-crystallization studies.
<b>Storage</b>	Upon delivery aliquot and store at -80 centigrade. Avoid multiple freeze-thaw cycles. The protein is stable for 12 months at -80 centigrade, for 2-4 weeks at 4 centigrade.
<b>Storage Buffer</b>	30 mM Tris pH 7.4; 500 mM NaCl; 10% glycerol; 3 mM MgCl <sub>2</sub> ; 5 mM beta-mercaptoethanol; 1 mM PMSF; 1 mM Benzamidine
<b>Reconstitution</b>	Clear solution in 30 mM Tris, pH7.4, 150 mM NaCl, 40% Glycerol, 5 mM DTT
<b>GENE INFORMATION</b>	
<b>Gene Name</b>	ME2 malic enzyme 2, NAD(+)-dependent, mitochondrial [ Homo sapiens (human) ]
<b>Official Symbol</b>	ME2
<b>Synonyms</b>	ME2; malic enzyme 2, NAD(+)-dependent, mitochondrial; NAD-dependent malic enzyme, mitochondrial; NAD-ME; malate dehydrogenase; pyruvic-malic carboxylase; ODS1;
<b>Gene ID</b>	4200
<b>mRNA Refseq</b>	NM_001168335
<b>Protein Refseq</b>	NP_001161807

 Tel: 1-631-559-9269 1-516-512-3133

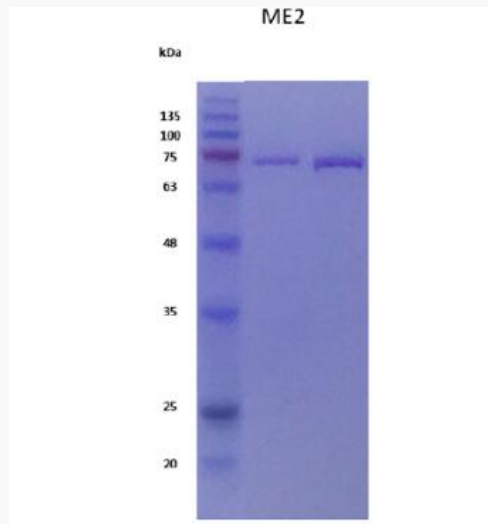
 Email: [info@creative-biomart.com](mailto:info@creative-biomart.com)  Fax: 1-631-938-8127

 45-1 Ramsey Road, Shirley, NY 11967, USA

**MIM** 154270

**UniProt ID** P23368

**SDS-PAGE**



 Tel: 1-631-559-9269 1-516-512-3133

 Email: [info@creative-biomart.com](mailto:info@creative-biomart.com)  Fax: 1-631-938-8127

 45-1 Ramsey Road, Shirley, NY 11967, USA