

Recombinant Human ME2 Protein (Gly220-Ala426), N-His tagged

Cat. No. ME2-4529H Lot. No. (See product label)

SPECIFICATION

Product Overview	Recombinant human ME2 (Gly220-Ala426) fused with the N-His tag was expressed in E. coli.
Species	Human
Source	E.coli
ProteinLength	Gly220-Ala426
Form	Lyophilized powder/frozen liquid
Molecular Mass	25.40 kDa
Purity	>90% as determined by SDS-PAGE.
Notes	For research use only.
Storage	Use a manual defrost freezer and avoid repeated freeze thaw cycles. Store at 2 to 8 centigrade for one week. Store at -20 to -80 centigrade for twelve months from the date of receipt.
Storage Buffer	Lyophilized from PBS, pH 7.4, 0.02% NLS, 1mM EDTA, 4% trehalose, 1% mannitol.
Reconstitution	Reconstitute in sterile water for a stock solution.

 Tel: 1-631-559-9269 1-516-512-3133

 Email: info@creative-biomart.com  Fax: 1-631-938-8127

 45-1 Ramsey Road, Shirley, NY 11967, USA

Shipping They are shipped out with dry ice/blue ice unless customers require otherwise.

GENE INFORMATION

Gene Name ME2 malic enzyme 2, NAD (+) -dependent, mitochondrial [Homo sapiens (human)]

Official Symbol ME2

Synonyms ME2; malic enzyme 2, NAD (+) -dependent, mitochondrial; NAD-dependent malic enzyme, mitochondrial; NAD-ME; malate dehydrogenase; pyruvic-malic carboxylase; ODS1;

Gene ID 4200

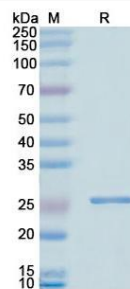
mRNA Refseq NM_001168335

Protein Refseq NP_001161807

MIM 154270

UniProt ID P23368

SDS-PAGE



 Tel: 1-631-559-9269 1-516-512-3133

 Email: info@creative-biomart.com  Fax: 1-631-938-8127

 45-1 Ramsey Road, Shirley, NY 11967, USA