

# Recombinant Human ME2 Protein, Myc/DDK-tagged, C13 and N15-labeled

**Cat. No.** ME2-5218H    **Lot. No.** (See product label)

## SPECIFICATION

<b>Product Overview</b>	ME2 MS Standard C13 and N15-labeled recombinant protein (NP_002387) with a C-terminal MYC/DDK tag, was expressed in HEK293 cells.
<b>Species</b>	Human
<b>Source</b>	HEK293
<b>Description</b>	This gene encodes a mitochondrial NAD-dependent malic enzyme, a homotetrameric protein, that catalyzes the oxidative decarboxylation of malate to pyruvate. It had previously been weakly linked to a syndrome known as Friedreich ataxia that has since been shown to be the result of mutation in a completely different gene. Certain single-nucleotide polymorphism haplotypes of this gene have been shown to increase the risk for idiopathic generalized epilepsy. Alternatively spliced transcript variants encoding different isoforms found for this gene.
<b>Molecular Mass</b>	65.44 kDa
<b>AA Sequence</b>	<p>MLSRLRVVSTTCTLACRHLHIKEK GKPLMLNPR TNKGMAFTLQERQMLGLQGLLPP  KIETQDIQALRFHRNLKMTSPLEKYIYIMGIQERNEKLFYRILQDDIESLMPIVYTPTV  GLACSQYGHIFRRPKGLFISISDRGHVRSIVDNWPENHVKAVVVTDGERILGLGDLG  VYGMGIPVGKLCCLYTACAGIRPDRCLPVCIDVGTDNIALLKDPFYMGLYQKRDR TQQ  YDDLIDEFMKAITDRYGRNTLIQFEDFGNHNAFRFLRKYREKYCTFNDDIQGTA AVAL  AGLLAAQKVISKPISEHKILFLGAGEAALGIANLIVMSMVENGLSEQEAQKKIWMFDKY</p>

 Tel: 1-631-559-9269    1-516-512-3133

 Email: [info@creative-biomart.com](mailto:info@creative-biomart.com)     Fax: 1-631-938-8127

 45-1 Ramsey Road, Shirley, NY 11967, USA

GLLVKGRKAKIDSYQEPFTHSAPESIPDTFEDAVNILKPSTIIGVAGAGRLFTPDVIRA  
 MASINERPVIFALSNPTAQAECTAEEAYTLTEGRCLFASGSPFGPVKLTGDRVFTPG  
 QGNNVYIFPGVALAVILCNTRHISDSVFLEAAKALTSQTLDEELAQGRLYPPLANIQEV  
 SINIAIKVTEYLYANKMAFRYPEPEDKAKYVKERTWRSEYDSELLPDVYEWPESSASP  
 PVITETRTRPLEQKLISEEDLAANDILDYKDDDDKV

**Purity** > 80% as determined by SDS-PAGE and Coomassie blue staining

**Stability** Stable for 3 months from receipt of products under proper storage and handling conditions.

**Storage** Store at -80 centigrade. Avoid repeated freeze-thaw cycles.

**Concentration** 50 µg/mL as determined by BCA

**Storage Buffer** 100 mM glycine, 25 mM Tris-HCl, pH 7.3.

## GENE INFORMATION

**Gene Name** ME2 malic enzyme 2 [ *Homo sapiens* (human) ]

**Official Symbol** ME2

**Synonyms** ME2; malic enzyme 2, NAD(+)-dependent, mitochondrial; NAD-dependent malic enzyme, mitochondrial; NAD-ME; malate dehydrogenase; pyruvic-malic carboxylase; ODS1;

**Gene ID** 4200

**mRNA Refseq** NM\_002396

 Tel: 1-631-559-9269 1-516-512-3133

 Email: [info@creative-biomart.com](mailto:info@creative-biomart.com)  Fax: 1-631-938-8127

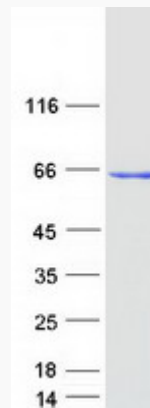
 45-1 Ramsey Road, Shirley, NY 11967, USA

**Protein Refseq**      NP\_002387

**MIM**                    154270

**UniProt ID**            P23368

**SDS-PAGE**



 Tel: 1-631-559-9269    1-516-512-3133

 Email: [info@creative-biomart.com](mailto:info@creative-biomart.com)     Fax: 1-631-938-8127

 45-1 Ramsey Road, Shirley, NY 11967, USA