

Recombinant Full Length Human MEA1 Protein, C-Flag-tagged

Cat. No. MEA1-1998HFL **Lot. No.** (See product label)

SPECIFICATION

Product Overview	Recombinant Full Length Human MEA1 Protein, fused to Flag-tag at C-terminus, was expressed in Mammalian cells.
Species	Human
Source	Mammalian Cells
Description	Predicted to be involved in male gonad development. Predicted to be located in cytoplasm.
Form	25 mM Tris HCl, pH 7.3, 100 mM glycine, 10% glycerol.
Molecular Mass	19.7 kDa
AA Sequence	MGPERHLSGAPARMATVVLGGDTMGPERIFPNQTEELGHQGPSEGTDWSSSEEP EEEQEETGSGPAGYSY QPLNQDPEQEEVELAPVGDGDVVADIQDRIQALGLHLPD PPLESEDEDEEGATALNNHSSIPMDPEHVEL VKRTMAGVSLPAPGVPAWAREISDA QWEDVVQKALQARQASPAWK TRTRPLEQKLISEEDLAANDILDYKDDDDKV
Purity	> 80% as determined by SDS-PAGE and Coomassie blue staining.
Stability	Stable for 12 months from the date of receipt of the product under proper storage and handling conditions. Avoid repeated freeze-thaw cycles.
Storage	Store at -80 centigrade.

 Tel: 1-631-559-9269 1-516-512-3133

 Email: info@creative-biomart.com  Fax: 1-631-938-8127

 45-1 Ramsey Road, Shirley, NY 11967, USA

Concentration >50 ug/mL as determined by microplate BCA method.

Preparation Recombinant protein was captured through anti-DDK affinity column followed by conventional chromatography steps.

Full Length Full L.

GENE INFORMATION

Gene Name MEA1 male-enhanced antigen 1 [Homo sapiens (human)]

Official Symbol MEA1

Synonyms HYS; MEA

Gene ID 4201

mRNA Refseq NM_014623.4

Protein Refseq NP_055438.1

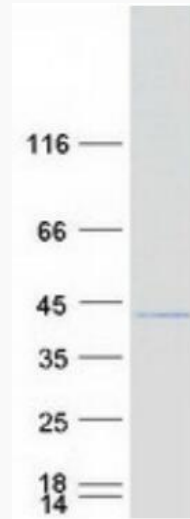
MIM 143170

UniProt ID Q16626

 Tel: 1-631-559-9269 1-516-512-3133

 Email: info@creative-biomart.com  Fax: 1-631-938-8127

 45-1 Ramsey Road, Shirley, NY 11967, USA



Coomassie blue staining of purified MEA1 protein.

 Tel: 1-631-559-9269 1-516-512-3133

 Email: info@creative-biomart.com  Fax: 1-631-938-8127

 45-1 Ramsey Road, Shirley, NY 11967, USA