

Recombinant Human MECOM Protein, GST-tagged

Cat. No. MECOM-4490H Lot. No. (See product label)

SPECIFICATION

Product Overview	Human MDS1 full-length ORF (NP_004982.1, 1 a.a. - 169 a.a.) recombinant protein with GST-tag at N-terminal.
Species	Human
Source	Wheat Germ
Description	The protein encoded by this gene is a transcriptional regulator and oncoprotein that may be involved in hematopoiesis, apoptosis, development, and cell differentiation and proliferation. The encoded protein can interact with CTBP1, SMAD3, CREBBP, KAT2B, MAPK8, and MAPK9. This gene can undergo translocation with the AML1 gene, resulting in overexpression of this gene and the onset of leukemia. Several transcript variants encoding a few different isoforms have been found for this gene. [provided by RefSeq, Mar 2011]
Molecular Mass	45.1 kDa
AA Sequence	MRSKGRARKLATNNECVYGNYPEIPLEEMPDADGVASTPSLNIQEPCSPATSSEAF PKEGSPYKAPIYIPDDIPIPAEFELRESNMPGAGLGIWTKRKIEVGEKFGPYVGEQRS NLKDPSYGWEVHLPRSRVSVHSWLYLGKRSSDVGIAFSQADVMPGLQCAFLS
Applications	Enzyme-linked Immunoabsorbent Assay Western Blot (Recombinant protein) Antibody Production Protein Array

 Tel: 1-631-559-9269 1-516-512-3133

 Email: info@creative-biomart.com  Fax: 1-631-938-8127

 45-1 Ramsey Road, Shirley, NY 11967, USA

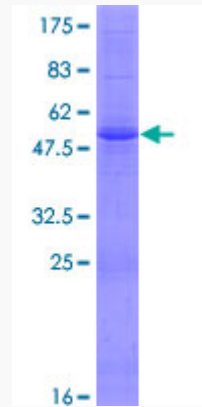
Notes	Best use within three months from the date of receipt of this protein.
Storage	Store at -80 centigrade. Aliquot to avoid repeated freezing and thawing.
Storage Buffer	50 mM Tris-HCl, 10 mM reduced Glutathione, pH=8.0 in the elution buffer.
GENE INFORMATION	
Gene Name	MECOM MDS1 and EVI1 complex locus [Homo sapiens]
Official Symbol	MECOM
Synonyms	MECOM; MDS1 and EVI1 complex locus; ecotropic viral integration site 1 , EVI1, MDS1, myelodysplasia syndrome 1; MDS1 and EVI1 complex locus protein EVI1; MDS1 EVI1; PRDM3; oncogene EVI1; zinc finger protein Evi1; AML1-EVI-1 fusion protein; MDS1 and EVI1 complex locus protein MDS1; myelodysplasia syndrome-associated protein 1; ecotropic virus integration site 1 protein homolog; EVI1; MDS1; MDS1-EVI1; AML1-EVI-1; MGC97004; MGC163392;
Gene ID	2122
mRNA Refseq	NM_001105077
Protein Refseq	NP_001098547
MIM	165215
UniProt ID	Q03112

 Tel: 1-631-559-9269 1-516-512-3133

 Email: info@creative-biomart.com  Fax: 1-631-938-8127

 45-1 Ramsey Road, Shirley, NY 11967, USA

**Quality Control
Testing**



12.5% SDS-PAGE Stained with Coomassie Blue

 Tel: 1-631-559-9269 1-516-512-3133

 Email: info@creative-biomart.com  Fax: 1-631-938-8127

 45-1 Ramsey Road, Shirley, NY 11967, USA