

Active Recombinant Human MECP2 Protein, His tagged

Cat. No. MECP2-17H Lot. No. (See product label)

SPECIFICATION

Product Overview	Recombinant MECP2 (80-166) protein that includes amino acids 80-166 of human MECP2 protein (accession number NP_004983.1) was expressed in E. coli cells with an N-terminal 6xHis tag.
Species	Human
Source	E.coli
ProteinLength	80-166 aa
Description	<p>DNA methylation is the major modification of eukaryotic genomes and plays an essential role in mammalian development. Human proteins MECP2, MBD1, MBD2, MBD3, and MBD4 comprise a family of nuclear proteins related by the presence in each of a methyl-CpG binding domain (MBD). Each of these proteins, with the exception of MBD3, is capable of binding specifically to methylated DNA. MECP2, MBD1 and MBD2 can also repress transcription from methylated gene promoters. In contrast to other MBD family members, MECP2 is X-linked and subject to X inactivation. MECP2 is dispensible in stem cells, but is essential for embryonic development. MECP2 gene mutations are the cause of most cases of Rett syndrome, a progressive neurologic developmental disorder and one of the most common causes of cognitive disability in females. Alternative splicing results in multiple transcript variants encoding different isoforms.</p>
Form	Recombinant MECP2 (80-166) protein is supplied in 25 mM Tris 8.0, 300mM NaCl,

 Tel: 1-631-559-9269 1-516-512-3133

 Email: info@creative-biomart.com  Fax: 1-631-938-8127

 45-1 Ramsey Road, Shirley, NY 11967, USA

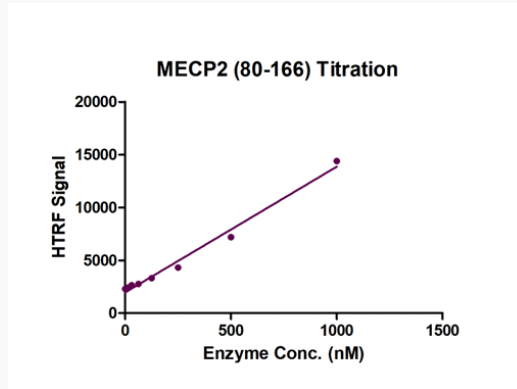
20% glycerol, 0.5 mM TCEP.

Molecular Mass 12.19 kDa**Purity** > 95%**Concentration** 1 µg/µL

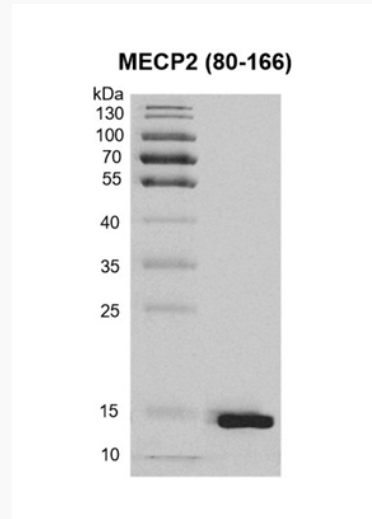
GENE INFORMATION

Gene Name MECP2 methyl-CpG binding protein 2 [Homo sapiens (human)]**Official Symbol** MECP2**Synonyms** MECP2; methyl-CpG binding protein 2; RS; RTS; RTT; PPMX; MRX16; MRX79; MRXSL; AUTSX3; MRXS13; methyl-CpG-binding protein 2; meCp-2 protein**Gene ID** 4204**mRNA Refseq** NM_004992**Protein Refseq** NP_004983**MIM** 300005**UniProt ID** P51608 Tel: 1-631-559-9269 1-516-512-3133 Email: info@creative-biomart.com  Fax: 1-631-938-8127 45-1 Ramsey Road, Shirley, NY 11967, USA

Activity



SDS-PAGE



12.5% SDS-PAGE gel stained with Coomassie Blue.

 Tel: 1-631-559-9269 1-516-512-3133

 Email: info@creative-biomart.com  Fax: 1-631-938-8127

 45-1 Ramsey Road, Shirley, NY 11967, USA