

Recombinant Human MECP2 Protein (Met1-Lys177), N-His tagged

Cat. No. MECP2-4531H Lot. No. (See product label)

SPECIFICATION

Product Overview	Recombinant human MECP2 (Met1-Lys177) fused with the N-His tag was expressed in E. coli.
Species	Human
Source	E.coli
ProteinLength	Met1-Lys177
Form	Lyophilized powder/frozen liquid
Molecular Mass	21.98 kDa
Purity	>90% as determined by SDS-PAGE.
Notes	For research use only.
Storage	Use a manual defrost freezer and avoid repeated freeze thaw cycles. Store at 2 to 8 centigrade for one week. Store at -20 to -80 centigrade for twelve months from the date of receipt.
Storage Buffer	0.01M PBS, pH 7.4, 0.02% NLS
Reconstitution	Reconstitute in sterile water for a stock solution.

 Tel: 1-631-559-9269 1-516-512-3133

 Email: info@creative-biomart.com  Fax: 1-631-938-8127

 45-1 Ramsey Road, Shirley, NY 11967, USA

Shipping

They are shipped out with dry ice/blue ice unless customers require otherwise.

GENE INFORMATION
Gene Name

MECP2 methyl CpG binding protein 2 (Rett syndrome) [Homo sapiens (human)]

Official Symbol

MECP2

Synonyms

MECP2; methyl CpG binding protein 2 (Rett syndrome); mental retardation, X linked 16, mental retardation, X linked 79, MRX16, MRX79, RTT; methyl-CpG-binding protein 2; meCp-2 protein; RS; RTS; RTT; PPMX; MRX16; MRX79; MRXSL; AUTSX3; MRXS13; DKFZp686A24160;

Gene ID

4204

mRNA Refseq

NM_001110792

Protein Refseq

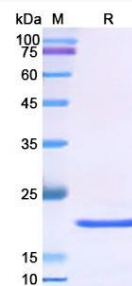
NP_001104262

MIM

300005

UniProt ID

P51608

SDS-PAGE


 Tel: 1-631-559-9269 1-516-512-3133

 Email: info@creative-biomart.com  Fax: 1-631-938-8127

 45-1 Ramsey Road, Shirley, NY 11967, USA