

Recombinant Human MECR Protein, Myc/DDK-tagged, C13 and N15-labeled

Cat. No. MECR-2530H **Lot. No.** (See product label)

SPECIFICATION

Product Overview	MECR MS Standard C13 and N15-labeled recombinant protein (NP_057095) with a C-terminal MYC/DDK tag, was expressed in HEK293 cells.
Species	Human
Source	HEK293
Description	The protein encoded by this gene is an oxidoreductase that catalyzes the last step in mitochondrial fatty acid synthesis. Defects in this gene are a cause of childhood-onset dystonia and optic atrophy.
Molecular Mass	40.4 kDa
AA Sequence	MWVCSTLWRVRTPARQWRGLLPASGCHGPAASSYSASAEPARVRALVYGHGDP AKVVELKNLELAAVRGSDVRVKMLAAPINPSDINMIQGNYGLLPELPAVGGNEGVAQ VVAVGSNVTGLKPGDWVIPANAGLGTWRTEAVFSEEALIQVPSDIPLQSAATLGVNP CTAYRMLMDFEQLQPGDSVIQNASNSGVGQAVIQIAAALGLRTINVVRDRPDIQKLS DRLKSLGAEHVITEEELRRPEMKNFFKDMPQPRALNCVGGKSSTELLRQLARGGT MVTYGGMAKQPVVASVSLIFKDLKLRGFWLSQWKKDHSPDQFKELILTCLDIRRG QLTAPACSQVPLQDYQSALEASMKPFISSKQILTMTRTRPLEQKLISEEDLAANDILD YKDDDDKV
Purity	> 80% as determined by SDS-PAGE and Coomassie blue staining

 Tel: 1-631-559-9269 1-516-512-3133

 Email: info@creative-biomart.com  Fax: 1-631-938-8127

 45-1 Ramsey Road, Shirley, NY 11967, USA

Stability	Stable for 3 months from receipt of products under proper storage and handling conditions.
Storage	Store at -80 centigrade. Avoid repeated freeze-thaw cycles.
Concentration	50 µg/mL as determined by BCA
Storage Buffer	100 mM glycine, 25 mM Tris-HCl, pH 7.3.

GENE INFORMATION

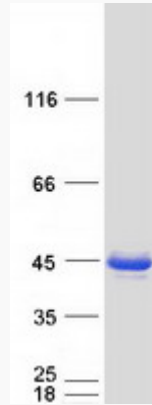
Gene Name	MECR mitochondrial trans-2-enoyl-CoA reductase [Homo sapiens (human)]
Official Symbol	MECR
Synonyms	MECR; mitochondrial trans-2-enoyl-CoA reductase; trans-2-enoyl-CoA reductase, mitochondrial; CGI 63; FASN2B; mitochondrial 2 enoyl thioester reductase; NRBF1; nuclear receptor binding factor 1; NRBF-1; hsNrbf-1; nuclear receptor-binding factor 1; mitochondrial 2-enoyl thioester reductase; homolog of yeast 2-enoyl thioester reductase; CGI-63;
Gene ID	51102
mRNA Refseq	NM_016011
Protein Refseq	NP_057095
MIM	608205
UniProt ID	Q9BV79

 Tel: 1-631-559-9269 1-516-512-3133

 Email: info@creative-biomart.com  Fax: 1-631-938-8127

 45-1 Ramsey Road, Shirley, NY 11967, USA

SDS-PAGE



 Tel: 1-631-559-9269 1-516-512-3133

 Email: info@creative-biomart.com  Fax: 1-631-938-8127

 45-1 Ramsey Road, Shirley, NY 11967, USA