

Recombinant Human MECR Protein, GST-tagged

Cat. No. MECR-4482H Lot. No. (See product label)

SPECIFICATION

Product Overview	Human MECR full-length ORF (NP_057095.2, 1 a.a. - 373 a.a.) recombinant protein with GST-tag at N-terminal.
Species	Human
Source	Wheat Germ
Description	The protein encoded by this gene is an oxidoreductase that catalyzes the last step in mitochondrial fatty acid synthesis. Defects in this gene are a cause of childhood-onset dystonia and optic atrophy. [provided by RefSeq, Mar 2017]
Molecular Mass	66.9 kDa
AA Sequence	MWVCSTLWRVRTPARQWRGLLPASGCHGPAASSYSASAEPARVRALVYGHGDP AKVVELKNLELAAVRGSDVRVKMLAAPINPSDINMIQGNYGFLPELPAVGGNEGVAQ VVAVGSNVTGLKPGDWVIPANAGLGTWRTEAVFSEEALIQVPSDIPLQSAATLGVNP CTAYRMLMDFEQLQPGDSVIQNASNSGVGQAVIQIAAALGLRTINVVRDRPDIQKLS DRLKSLGAEHVITEEELRRPEMKNFFKDMPQPRALNLCVGGKSSTELLRQLARGGT MVTYGGMAKQPVVASVLLIFKDLKLRGFWLSQWKKDHSPDQFKELILTCLDLIRRG QLTAPACSQVPLQDYQSALEASMKPFISSKQILTM
Applications	Enzyme-linked Immunoabsorbent Assay Western Blot (Recombinant protein) Antibody Production Protein Array

 Tel: 1-631-559-9269 1-516-512-3133

 Email: info@creative-biomart.com  Fax: 1-631-938-8127

 45-1 Ramsey Road, Shirley, NY 11967, USA

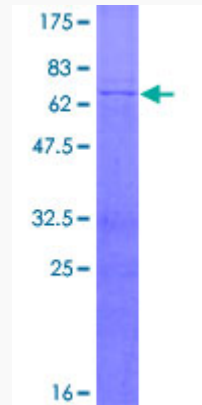
Notes	Best use within three months from the date of receipt of this protein.
Storage	Store at -80 centigrade. Aliquot to avoid repeated freezing and thawing.
Storage Buffer	50 mM Tris-HCl, 10 mM reduced Glutathione, pH=8.0 in the elution buffer.
GENE INFORMATION	
Gene Name	MECR mitochondrial trans-2-enoyl-CoA reductase [Homo sapiens]
Official Symbol	MECR
Synonyms	MECR; mitochondrial trans-2-enoyl-CoA reductase; trans-2-enoyl-CoA reductase, mitochondrial; CGI 63; FASN2B; mitochondrial 2 enoyl thioester reductase; NRBF1; nuclear receptor binding factor 1; NRBF-1; hsNrpf-1; nuclear receptor-binding factor 1; mitochondrial 2-enoyl thioester reductase; homolog of yeast 2-enoyl thioester reductase; CGI-63;
Gene ID	51102
mRNA Refseq	NM_001024732
Protein Refseq	NP_001019903
MIM	608205
UniProt ID	Q9BV79

 Tel: 1-631-559-9269 1-516-512-3133

 Email: info@creative-biomart.com  Fax: 1-631-938-8127

 45-1 Ramsey Road, Shirley, NY 11967, USA

**Quality Control
Testing**



12.5% SDS-PAGE Stained with Coomassie Blue

 Tel: 1-631-559-9269 1-516-512-3133

 Email: info@creative-biomart.com  Fax: 1-631-938-8127

 45-1 Ramsey Road, Shirley, NY 11967, USA