

Recombinant Full Length Human MED10 Protein, C-Flag-tagged

Cat. No. MED10-2042HFL **Lot. No.** (See product label)

SPECIFICATION

| | |
|-------------------------|---|
| Product Overview | Recombinant Full Length Human MED10 Protein, fused to Flag-tag at C-terminus, was expressed in Mammalian cells. |
| Species | Human |
| Source | Mammalian Cells |
| Description | MED10 is a component of the Mediator complex, which is a coactivator for DNA-binding factors that activate transcription via RNA polymerase II. |
| Form | 25 mM Tris HCl, pH 7.3, 100 mM glycine, 10% glycerol. |
| Molecular Mass | 15.5 kDa |
| AA Sequence | MAEKFDHLEEHLEKFFVENIRQLGIIVSDFQPSSQAGLNQKLNFIIVTGLQDIDKCRQQL HDITVPLEVF EY IDQGRNPQLYTK ECLERALAKNEQVKGKIDTMKKFKSL LIQELSKV FPEDMAKYRSIRGEDHPPS TRTRPLEQKLISEEDLAANDILDYKDDDDKV |
| Purity | > 80% as determined by SDS-PAGE and Coomassie blue staining. |
| Stability | Stable for 12 months from the date of receipt of the product under proper storage and handling conditions. Avoid repeated freeze-thaw cycles. |
| Storage | Store at -80 centigrade. |

 Tel: 1-631-559-9269 1-516-512-3133

 Email: info@creative-biomart.com  Fax: 1-631-938-8127

 45-1 Ramsey Road, Shirley, NY 11967, USA

| | |
|----------------------|--|
| Concentration | >50 ug/mL as determined by microplate BCA method. |
| Preparation | Recombinant protein was captured through anti-DDK affinity column followed by conventional chromatography steps. |
| Full Length | Full L. |

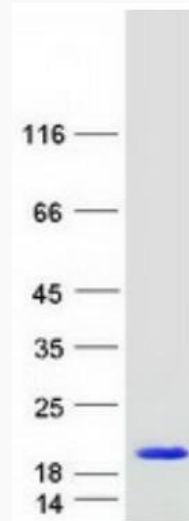
GENE INFORMATION

| | |
|------------------------|--|
| Gene Name | MED10 mediator complex subunit 10 [Homo sapiens (human)] |
| Official Symbol | MED10 |
| Synonyms | L6; NUT2; TRG20 |
| Gene ID | 84246 |
| mRNA Refseq | NM_032286.3 |
| Protein Refseq | NP_115662.2 |
| MIM | 612382 |
| UniProt ID | Q9BTT4 |

 Tel: 1-631-559-9269 1-516-512-3133

 Email: info@creative-biomart.com  Fax: 1-631-938-8127

 45-1 Ramsey Road, Shirley, NY 11967, USA



Coomassie blue staining of purified MED10 protein.

 Tel: 1-631-559-9269 1-516-512-3133

 Email: info@creative-biomart.com  Fax: 1-631-938-8127

 45-1 Ramsey Road, Shirley, NY 11967, USA