

Recombinant Human MED16 protein, His-tagged

Cat. No. MED16-11H Lot. No. (See product label)

SPECIFICATION

Product Overview Recombinant Human MED16 protein(1-350 aa), fused with N-terminal His tag, was expressed in E. coli.

Species Human

Source E.coli

ProteinLength 1-350 aa

Form The purified protein was Lyophilized from sterile PBS (58mM Na₂HPO₄, 17mM NaH₂PO₄, 68mM NaCl, pH7.4). 5 % trehalose and 5 % mannitol are added as protectant before lyophilization.

Purity 85%, by SDS-PAGE with Coomassie Brilliant Blue staining.

Storage Short-term storage: Store at 2-8°C for (1-2 weeks). Long-term storage: Aliquot and store at -20°C to -80°C for up to 3 months, reconstitution with sterile water and addition of an equal volume of glycerol. Avoid repeat freeze-thaw cycles.

Reconstitution Reconstitute at 0.25 µg/µl in 200 µl sterile water for short-term storage. After reconstitution with sterile water, if glycerol has no effect on subsequent experiments, it is recommended to add an equal volume of glycerol for long-term storage.

GENE INFORMATION

 Tel: 1-631-559-9269 1-516-512-3133

 Email: info@creative-biomart.com  Fax: 1-631-938-8127

 45-1 Ramsey Road, Shirley, NY 11967, USA

Gene Name	MED16 mediator complex subunit 16 [Homo sapiens]
Official Symbol	MED16
Synonyms	MED16; mediator complex subunit 16; THRAP5, thyroid hormone receptor associated protein 5; mediator of RNA polymerase II transcription subunit 16; DRIP92; TRAP95; thyroid hormone receptor-associated protein 5; thyroid hormone receptor-associated protein, 95-kD subunit; vitamin D3 receptor-interacting protein complex 92 kDa component; thyroid hormone receptor-associated protein complex 95 kDa component; THRAP5;
Gene ID	10025
mRNA Refseq	NM_005481
Protein Refseq	NP_005472
MIM	604062
UniProt ID	Q9Y2X0

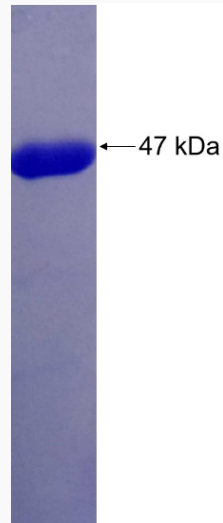
 Tel: 1-631-559-9269 1-516-512-3133

 Email: info@creative-biomart.com  Fax: 1-631-938-8127

 45-1 Ramsey Road, Shirley, NY 11967, USA



SDS-PAGE



Tel: 1-631-559-9269 1-516-512-3133

Email: info@creative-biomart.com Fax: 1-631-938-8127

45-1 Ramsey Road, Shirley, NY 11967, USA