

Recombinant Human MED18 Protein, Myc/DDK-tagged, C13 and N15-labeled

Cat. No. MED18-3848H Lot. No. (See product label)

SPECIFICATION

Product Overview	MED18 MS Standard C13 and N15-labeled recombinant protein (NP_001120822) with a C-terminal MYC/DDK tag, was expressed in HEK293 cells.
Species	Human
Source	HEK293
Description	MED18 is a component of the Mediator complex, which is a coactivator for DNA-binding factors that activate transcription via RNA polymerase II.
Molecular Mass	23.7 kDa
AA Sequence	MEAPPVTMMPVTGGTINMMEYLLQGSVLDHSLES LIHRLRGLCDNM EPETFLDHEM VFLKGGQQASPFVLRARRSMDRAGAPWHLRYLGQPEMGDKNRHALVRNCVDIATS ENLTDFLMEMGFRMDHEFVAKGHLFRKGIMKIMVYKIFRILVPGNTDSTEALSLSYLV ELSVVAPAGQDMVSDDMKNF AEQLKPLVHLEKIDPKRLMTRTRPLEQKLI SEEDLAA NDILDYKDDDDKV
Purity	> 80% as determined by SDS-PAGE and Coomassie blue staining
Stability	Stable for 3 months from receipt of products under proper storage and handling conditions.
Storage	Store at -80 centigrade. Avoid repeated freeze-thaw cycles.

 Tel: 1-631-559-9269 1-516-512-3133

 Email: info@creative-biomart.com  Fax: 1-631-938-8127

 45-1 Ramsey Road, Shirley, NY 11967, USA

Concentration 50 µg/mL as determined by BCA

Storage Buffer 100 mM glycine, 25 mM Tris-HCl, pH 7.3.

GENE INFORMATION

Gene Name [MED18 mediator complex subunit 18 \[Homo sapiens \(human\) \]](#)

Official Symbol [MED18](#)

Synonyms MED18; mediator complex subunit 18; mediator of RNA polymerase II transcription, subunit 18 homolog (*S. cerevisiae*); mediator of RNA polymerase II transcription subunit 18; FLJ20045; p28b; TRAP/mediator complex subunit p28b; mediator of RNA polymerase II transcription, subunit 18 homolog;

Gene ID [54797](#)

mRNA Refseq [NM_001127350](#)

Protein Refseq [NP_001120822](#)

MIM [612384](#)

UniProt ID [Q9BUE0](#)

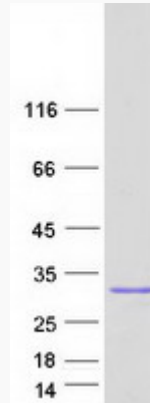
 Tel: 1-631-559-9269 1-516-512-3133

 Email: info@creative-biomart.com  Fax: 1-631-938-8127

 45-1 Ramsey Road, Shirley, NY 11967, USA



SDS-PAGE



Tel: 1-631-559-9269 1-516-512-3133

Email: info@creative-biomart.com Fax: 1-631-938-8127

45-1 Ramsey Road, Shirley, NY 11967, USA