

Recombinant Human MED22 Protein, GST-tagged

Cat. No. MED22-4473H Lot. No. (See product label)

SPECIFICATION

Product Overview	Human MED22 full-length ORF (NP_852468.1, 1 a.a. - 140 a.a.) recombinant protein with GST-tag at N-terminal.
Species	Human
Source	Wheat Germ
Description	This gene is located in the surfeit gene cluster, a group of very tightly linked housekeeping genes that do not share sequence similarity. The gene is oriented in a head-to-head fashion with RPL7A (SURF3) and the two genes share a bidirectional promoter. The encoded proteins are localized to the cytoplasm. Two alternative transcript variants encoding different isoforms have been identified for this gene. [provided by RefSeq]
Molecular Mass	42.9 kDa
AA Sequence	MAQQRALPQSKETLLQSYNKRLKDDIKSIMDNFTEIIKTAKIEDETQVSRATQGEQDN YEMHVRAANIVRAGESLMKLVSDLKQFLILNDFPSVNEAIDQRNQQRLRTLQEEDRK LITLRDEISIDLYLEEEYSSRYK
Applications	Enzyme-linked Immunoabsorbent Assay Western Blot (Recombinant protein) Antibody Production Protein Array

 Tel: 1-631-559-9269 1-516-512-3133

 Email: info@creative-biomart.com  Fax: 1-631-938-8127

 45-1 Ramsey Road, Shirley, NY 11967, USA

Notes	Best use within three months from the date of receipt of this protein.
Storage	Store at -80 centigrade. Aliquot to avoid repeated freezing and thawing.
Storage Buffer	50 mM Tris-HCl, 10 mM reduced Glutathione, pH=8.0 in the elution buffer.

GENE INFORMATION

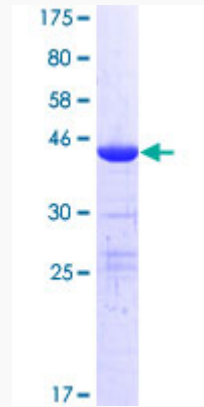
Gene Name	MED22 mediator complex subunit 22 [Homo sapiens]
Official Symbol	MED22
Synonyms	MED22; mediator complex subunit 22; SURF5, surfeit 5; mediator of RNA polymerase II transcription subunit 22; Med24; surfeit 5; surfeit locus protein 5; MED24; SURF5; surf-5; MGC48682;
Gene ID	6837
mRNA Refseq	NM_133640
Protein Refseq	NP_598395
MIM	185641
UniProt ID	Q15528

 Tel: 1-631-559-9269 1-516-512-3133

 Email: info@creative-biomart.com  Fax: 1-631-938-8127

 45-1 Ramsey Road, Shirley, NY 11967, USA

**Quality Control
Testing**



12.5% SDS-PAGE Stained with Coomassie Blue

 Tel: 1-631-559-9269 1-516-512-3133

 Email: info@creative-biomart.com  Fax: 1-631-938-8127

 45-1 Ramsey Road, Shirley, NY 11967, USA