

## Recombinant Human MED22 protein, GST-tagged

Cat. No. MED22-808H Lot. No. (See product label)

### SPECIFICATION

<b>Product Overview</b>	Recombinant Human MED22 protein(1-140 aa), fused with N-terminal GST tag, was expressed in E. coli.
<b>Species</b>	Human
<b>Source</b>	E. coli
<b>ProteinLength</b>	1-140 aa
<b>Form</b>	The purified protein was lyophilized from sterile phosphate-buffered saline (PBS: 58 mM Na <sub>2</sub> HPO <sub>4</sub> , 17 mM NaH <sub>2</sub> PO <sub>4</sub> , 68 mM NaCl, pH 8.0). Prior to lyophilization, 5% (w/v) trehalose and 5% (w/v) mannitol were incorporated as cryoprotective excipients. The protein was eluted with a buffer containing 100 mM reduced glutathione (GSH).
<b>AASequence</b>	MAQQRALPQSKETLLQSYNKRLKDDIKSIMDNFTEIIKTAKIEDETQVSRATQGEQDN YEMHVRAANIVRAGESLMKLVSDLKQFLILNDFPSVNEAIDQRNQQRLRTLQEECDRK LITLRDEISIDLYELEEEYSSRYK
<b>Purity</b>	85%, by SDS-PAGE.
<b>Storage</b>	Store at 2-8°C for 1-2 weeks. Aliquot and store at -20°C to -80°C for up to 3 months, reconstitution with sterile water and addition of an equal volume of glycerol. Avoid repeat freeze-thaw cycles.

 Tel: 1-631-559-9269 1-516-512-3133

 Email: [info@creative-biomart.com](mailto:info@creative-biomart.com)  Fax: 1-631-938-8127

 45-1 Ramsey Road, Shirley, NY 11967, USA

**Reconstitution** It is recommended that sterile water be added to the vial to prepare a stock solution of 0.25 ug/ul. Centrifuge the vial at 4°C before opening to recover the entire contents.

## GENE INFORMATION

**Gene Name** [MED22 mediator complex subunit 22 \[ Homo sapiens \]](#)

**Official Symbol** [MED22](#)

**Synonyms** MED22; mediator complex subunit 22; SURF5, surfeit 5; mediator of RNA polymerase II transcription subunit 22; Med24; surfeit 5; surfeit locus protein 5; MED24; SURF5; surf-5; MGC48682;

**mRNA Refseq** [NM\\_133640](#)

**Protein Refseq** [NP\\_598395](#)

**MIM** [185641](#)

**UniProt ID** [Q15528](#)

**Gene ID** [6837](#)

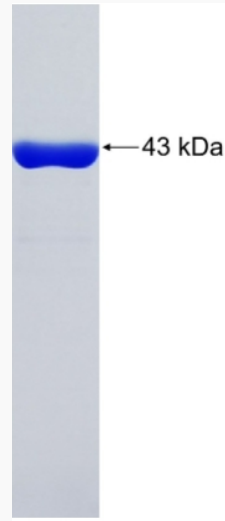
 Tel: 1-631-559-9269 1-516-512-3133

 Email: [info@creative-biomart.com](mailto:info@creative-biomart.com)  Fax: 1-631-938-8127

 45-1 Ramsey Road, Shirley, NY 11967, USA



SDS-PAGE



Tel: 1-631-559-9269 1-516-512-3133

Email: [info@creative-biomart.com](mailto:info@creative-biomart.com) Fax: 1-631-938-8127

45-1 Ramsey Road, Shirley, NY 11967, USA