

Recombinant Human MED6 Protein, GST-tagged

Cat. No. MED6-4466H Lot. No. (See product label)

SPECIFICATION

Product Overview	Human MED6 full-length ORF (AAH04106, 1 a.a. - 246 a.a.) recombinant protein with GST-tag at N-terminal.
Species	Human
Source	Wheat Germ
Description	MED6 (Mediator Complex Subunit 6) is a Protein Coding gene. Among its related pathways are Regulation of lipid metabolism by Peroxisome proliferator-activated receptor alpha (PPARalpha) and Gene Expression. GO annotations related to this gene include transcription factor binding and RNA polymerase II transcription cofactor activity.
Molecular Mass	52.80 kDa
AA Sequence	MAAVDIRDNLLGISWVDSSWIPILNSGSVLDYFSERSNPFYDRTCNNEVVKMQRLLT EHLNQMVGIEYILLHAQEPILFIRKQQRQSPAQVIPLADYIIAGVIYQAPDLGVSINSR VLTAVHGIQSAFDEAMSYCRYHPSKGYWWHFKDHEEQDKVRPKAKRKEEPSSIFQ RQRVDALLLDLRQKFPPKFVQLKPGKEKVPVDQTKKEAEPETVKPEEKETTKNVQ QTVSAKGPPEKRMRLQ
Applications	Enzyme-linked Immunoabsorbent Assay Western Blot (Recombinant protein) Antibody Production Protein Array

 Tel: 1-631-559-9269 1-516-512-3133

 Email: info@creative-biomart.com  Fax: 1-631-938-8127

 45-1 Ramsey Road, Shirley, NY 11967, USA

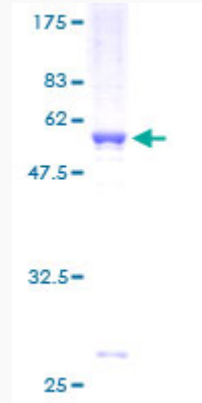
Notes	Best use within three months from the date of receipt of this protein.
Storage	Store at -80 centigrade. Aliquot to avoid repeated freezing and thawing.
Storage Buffer	50 mM Tris-HCl, 10 mM reduced Glutathione, pH=8.0 in the elution buffer.
GENE INFORMATION	
Gene Name	MED6 mediator complex subunit 6 [Homo sapiens]
Official Symbol	MED6
Synonyms	MED6; mediator complex subunit 6; mediator of RNA polymerase II transcription, subunit 6 homolog (S. cerevisiae); mediator of RNA polymerase II transcription subunit 6; NY REN 28; ARC33; hMed6; renal carcinoma antigen NY-REN-28; activator-recruited cofactor 33 kDa component; mediator of RNA polymerase II transcription, subunit 6 homolog; NY-REN-28;
Gene ID	10001
mRNA Refseq	NM_005466
Protein Refseq	NP_005457
MIM	602984
UniProt ID	O75586

 Tel: 1-631-559-9269 1-516-512-3133

 Email: info@creative-biomart.com  Fax: 1-631-938-8127

 45-1 Ramsey Road, Shirley, NY 11967, USA

**Quality Control
Testing**



12.5% SDS-PAGE Stained with Coomassie Blue

 Tel: 1-631-559-9269 1-516-512-3133

 Email: info@creative-biomart.com  Fax: 1-631-938-8127

 45-1 Ramsey Road, Shirley, NY 11967, USA