

## Recombinant Human MED6 protein, GST-tagged

Cat. No. MED6-6743H Lot. No. (See product label)

### SPECIFICATION

<b>Product Overview</b>	Recombinant Human MED6 protein(1-246 aa), fused with N-terminal GST tag, was expressed in E. coli.
<b>Species</b>	Human
<b>Source</b>	E.coli
<b>ProteinLength</b>	1-246 aa
<b>Form</b>	The purified protein was Lyophilized from sterile PBS (58mM Na <sub>2</sub> HPO <sub>4</sub> , 17mM NaH <sub>2</sub> PO <sub>4</sub> , 68mM NaCl, pH8.). 5 % trehalose and 5 % mannitol are added as protectant before lyophilization. The elution buffer contain 100mM GSH.
<b>Storage</b>	Short-term storage: Store at 2-8°C for (1-2 weeks). Long-term storage: Aliquot and store at -20°C to -80°C for up to 3 months, reconstitution with sterile water and addition of an equal volume of glycerol. Avoid repeat freeze-thaw cycles.
<b>Purity</b>	85%, by SDS-PAGE with Coomassie Brilliant Blue staining.

### GENE INFORMATION

<b>Official Symbol</b>	<b>MED6</b>
<b>Synonyms</b>	MED6; mediator complex subunit 6; mediator of RNA polymerase II transcription, subunit 6 homolog (S. cerevisiae); mediator of RNA polymerase II transcription

 Tel: 1-631-559-9269 1-516-512-3133

 Email: [info@creative-biomart.com](mailto:info@creative-biomart.com)  Fax: 1-631-938-8127

 45-1 Ramsey Road, Shirley, NY 11967, USA

subunit 6; NY REN 28; ARC33; hMed6; renal carcinoma antigen NY-REN-28; activator-recruited cofactor 33 kDa component; mediator of RNA polymerase II transcription, subunit 6 homolog; NY-REN-28;

**Gene ID** [10001](#)

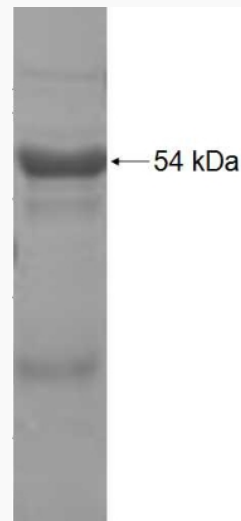
**mRNA Refseq** [NM\\_005466](#)

**Protein Refseq** [NP\\_005457](#)

**MIM** [602984](#)

**UniProt ID** [O75586](#)

**SDS-PAGE**



 Tel: 1-631-559-9269 1-516-512-3133

 Email: [info@creative-biomart.com](mailto:info@creative-biomart.com)  Fax: 1-631-938-8127

 45-1 Ramsey Road, Shirley, NY 11967, USA