

## Recombinant Human MEF2A Protein, His-tagged

Cat. No. MEF2A-001H Lot. No. (See product label)

### SPECIFICATION

<b>Product Overview</b>	Recombinant Human MEF2A Protein (1-499 (Full Length)) with 6xHis tag was expressed in E. coli.
<b>Species</b>	Human
<b>Source</b>	E.coli
<b>ProteinLength</b>	1-499
<b>Description</b>	The protein encoded by this gene is a DNA-binding transcription factor that activates many muscle-specific, growth factor-induced, and stress-induced genes. The encoded protein can act as a homodimer or as a heterodimer and is involved in several cellular processes, including muscle development, neuronal differentiation, cell growth control, and apoptosis. Defects in this gene could be a cause of autosomal dominant coronary artery disease 1 with myocardial infarction (ADCAD1). Several transcript variants encoding different isoforms have been found for this gene.
<b>Molecular Mass</b>	54.7 kDa
<b>Purity</b>	>90% confirmed by 10% SDS-PAGE stained with Coomassie Blue (CB), immunoblotting with anti-6xHis monoclonal (WB).
<b>Applications</b>	ELISA, Western Blot, Antibody Production, Protein array
<b>Quality Control Test</b>	10% SDS-PAGE stained with Coomassie Blue (CB), immunoblotting with anti-GST

 Tel: 1-631-559-9269 1-516-512-3133

 Email: [info@creative-biomart.com](mailto:info@creative-biomart.com)  Fax: 1-631-938-8127

 45-1 Ramsey Road, Shirley, NY 11967, USA

monoclonal and peptide fingerprinting by MALDI-TOF mass spectrometry.

**Storage**

Store working aliquots at 4 centigrade for up to one week. For extended storage, conserve at -80 centigrade.

**Expiry**

12 months from the date of purchase, if it is properly stored.

**Storage Buffer**

PBS.

**Shipping**

Dry Ice

## GENE INFORMATION

**Gene Name**

MEF2A myocyte enhancer factor 2A [ Homo sapiens (human) ]

**Official Symbol**

MEF2A

**Synonyms**

MEF2A; myocyte enhancer factor 2A; mef2; ADCAD1; RSRFC4; RSRFC9; myocyte-specific enhancer factor 2A; MADS box transcription enhancer factor 2, polypeptide A (myocyte enhancer factor 2A); serum response factor-like protein 1

**Gene ID**

4205

**mRNA Refseq**

NM\_005587

**Protein Refseq**

NP\_005578

**MIM**

600660

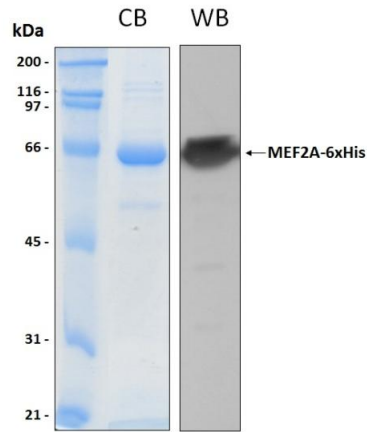
**UniProt ID**

Q02078

 Tel: 1-631-559-9269 1-516-512-3133

 Email: [info@creative-biomart.com](mailto:info@creative-biomart.com)  Fax: 1-631-938-8127

 45-1 Ramsey Road, Shirley, NY 11967, USA



 Tel: 1-631-559-9269 1-516-512-3133

 Email: [info@creative-biomart.com](mailto:info@creative-biomart.com)  Fax: 1-631-938-8127

 45-1 Ramsey Road, Shirley, NY 11967, USA